



# THE HALLEY PROJECT:

## A Mission In Our Solar System

### Flight Instructions Reference Card: Atari

#### Equipment Needed

Atari® 800, XL, or XE Personal Computers, 48K  
TV or monitor  
Disk drive  
Joystick

#### Disk Loading Instructions

1. Turn off the computer.
2. If you have an Atari 800, make sure the Atari BASIC cartridge is NOT in your computer.
3. Connect your joystick to controller port number 1.
4. Turn on the disk drive.
5. When the busy light goes off, insert The Halley Project disk into the disk drive and close the drive door.
6. Turn on the computer.
7. The program will load. After the title screens, you will see a letter from P.L.A.N.E.T. Headquarters. When you have read the letter, press any key.
8. Follow the directions on the screen to enter your name and select your mission.

**To restart the program,** press RESET.

**To erase all names and records,** hold down OPTION and press I on the keyboard.

Atari Reference Card, continued.

#### AT THE CONTROL PANEL

**To accelerate in a certain direction,** push the joystick in that direction. The longer you hold the joystick in that direction, the faster your speed will be.

**To go into Hyperspace,** increase your speed to 300,000 km/s. At 250,000 km/s, a warning buzzer sounds to let you know you're approaching Hyperspace.

**To brake,** press the space bar. If you are in Hyperspace, pressing the space bar brings you to an immediate stop. If you are traveling at a speed less than 300,000 km/s, each press of the space bar reduces your speed by about 50%.

**To change your field of vision,** hold the joystick button down while you move the joystick to the right or to the left. NOTE: This will not change the direction in which you are moving.

**To select your power level,** press H for High Power or L for Low Power.

**To engage the automatic landing system,** press A when the Planet/Moon Finder blinks and beeps. NOTE: There is no special landing area on Halley's Comet: simply fly into the comet to "land" on it.

**To blast off from a planet or moon,** press B.

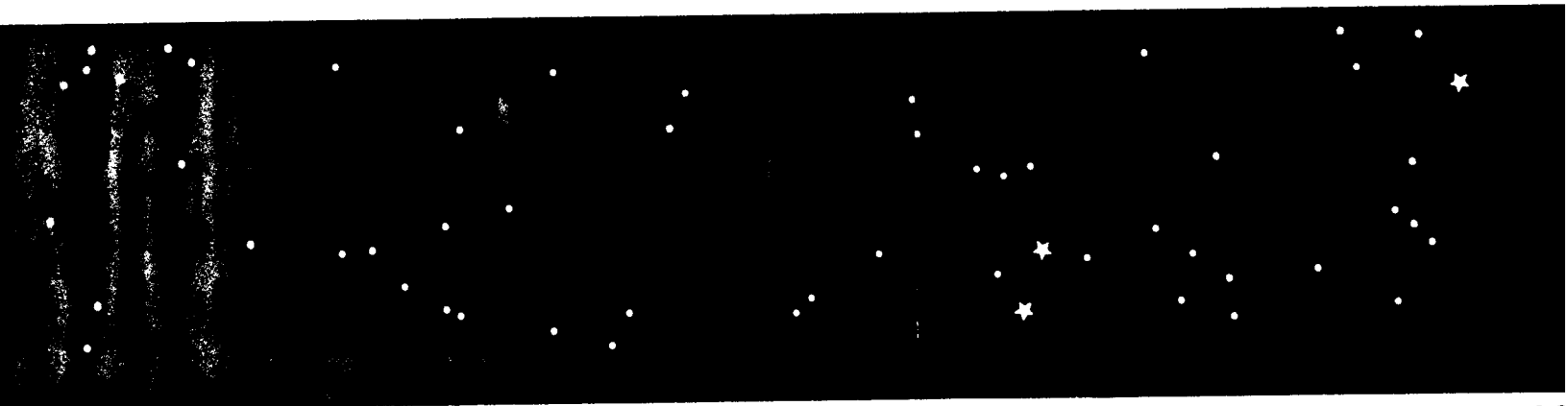
**To see the Radar Screen,** press R on the keyboard.

#### THE RADAR SCREEN

**To zoom in,** push the joystick forward. This will put you at a closer vantage point, but may not give you a full view of all the planets at once.

**To zoom out,** pull back on the joystick. This will give you a view of all the planets at the same time.

**To return to the Control Panel,** press R on the keyboard.



**AQUARIUS**

**CAPRICORN**

**SAGITTARIUS**

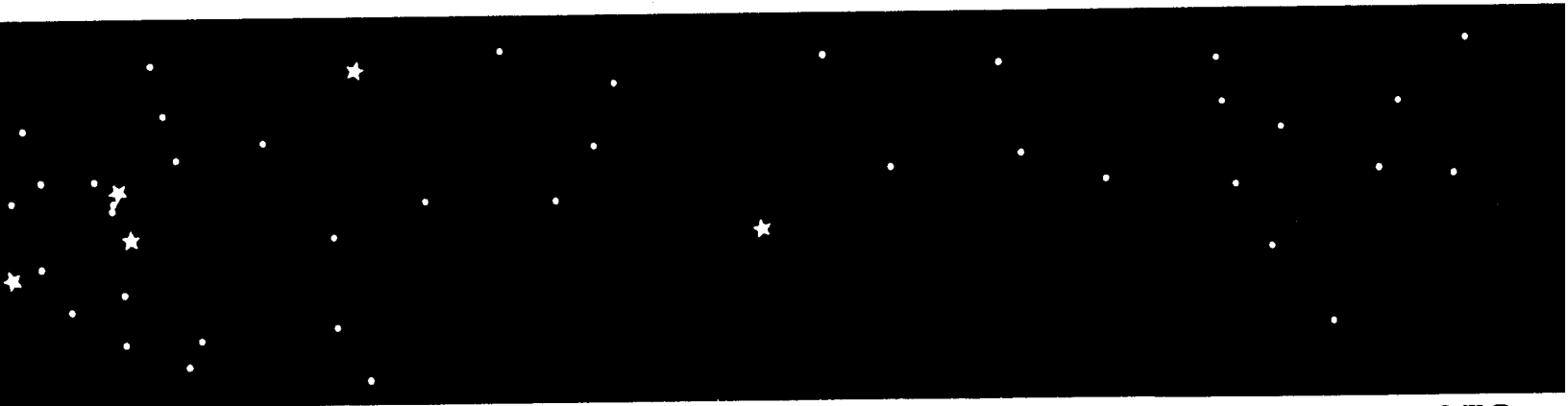
**SCORPIO**



**CANCER**

**GEMINI**

**TAURUS**

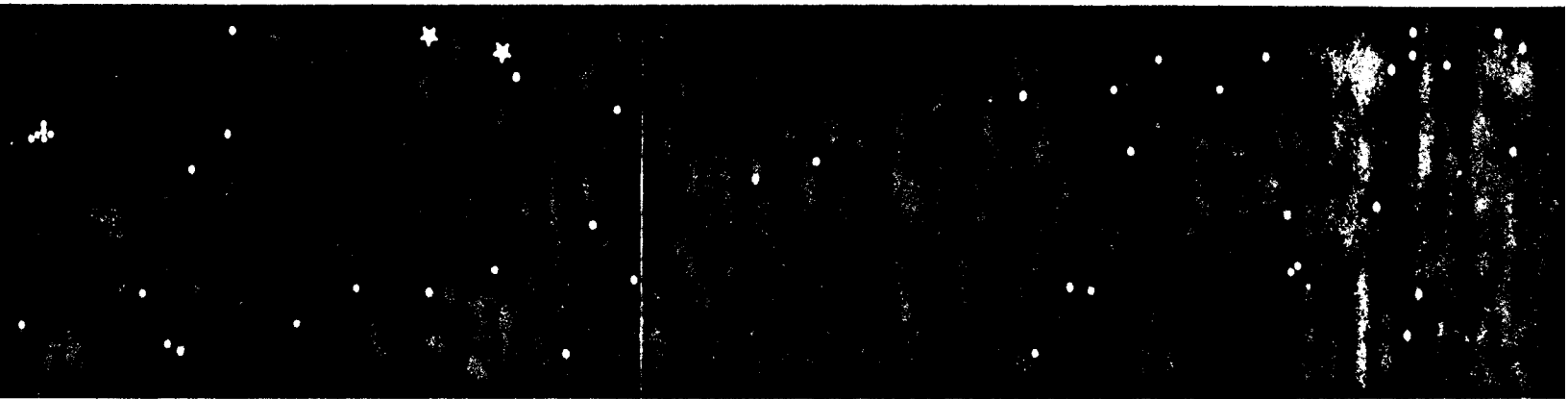


**SCORPIO**

**LIBRA**

**VIRGO**

**LEO**



**ARIES**

**PISCES**

**AQUARIUS**