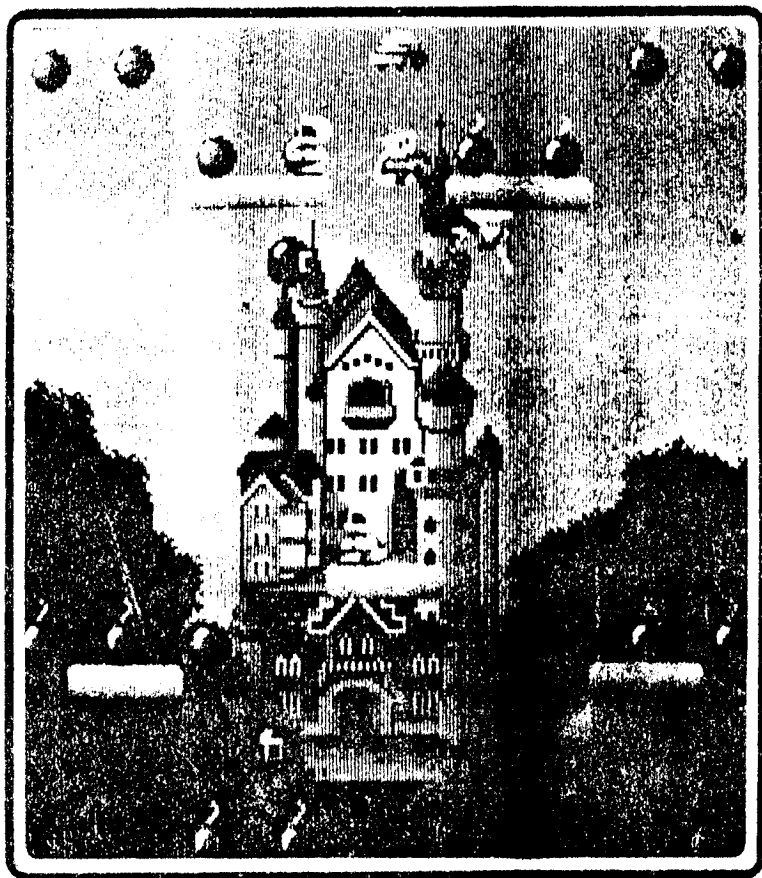


BOMB JACK

ボンジャック取扱説明書
Service Manual

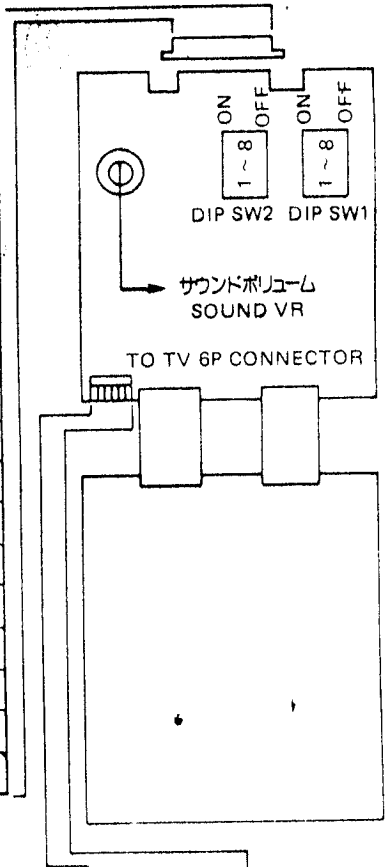


TEHKAN

ボンジャック BOMB JACK

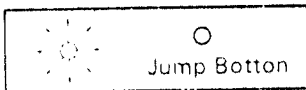
エッジコネクタ ● Edge Connector

SOLDER SIDE (ハンダ面)	NO	COMPONENT SIDE (部品面)
2P RIGHT	1	2P LEFT
2P UP	2	2P DOWN
2P JUMP	3	
	4	
1P RIGHT	5	1P LEFT
1P UP	6	1P DOWN
1P JUMP	7	
	8	
COIN SW1	9	COIN SW2
1P START	10	2P START
GND	11	GND
GND	12	GND
GND	13	GND
SPEAKER(+)	14	SPEAKER(-)
+12V	15	+12V
	16	
+5V	17	+5V
+5V	18	+5V



CONNECTOR KEL 1150-036-009
(4.0mm PITCH)

●ジョイスティックレバー8方向
JOYSTICK LEVER . . . 8 directions



1	BLUE
2	GREEN
3	RED
4	GND
5	SYNC
6	GND

CONNECTOR-S6P-SHF-1
(2.5mm PITCH)

電源 POWER SOURCE
+ 5V 5A
+12V 1A
(AF Amp. BTL system)

ディップスイッチ ● Dip Switch

DIP SWITCH 1		1	2	3	4	5	6	7	8
COIN1	1COIN - 1PLAY	OFF	OFF						
	1COIN - 2PLAY	ON	OFF						
	1COIN - 3PLAY	OFF	ON						
	1COIN - 6PLAY	ON	ON						
COIN2	1COIN - 1PLAY			OFF	OFF				
	2COIN - 1PLAY			ON	OFF				
	1COIN - 2PLAY			OFF	ON				
	1COIN - 3PLAY			ON	ON				
ジャックの数 NUMBER OF JACK	3 JACKS					OFF	OFF		
	4 JACKS					ON	OFF		
	5 JACKS					OFF	ON		
	2 JACKS					ON	ON		
タイプ TYPE	テーブル COCKTAIL TABLE								OFF
	アップライト UPRIGHT								ON
デモンストレーション音 DEMONSTRATION SOUND	音無 NON SOUND								OFF
	音有 SOUND								ON

DIP SWITCH 2		1	2	3	4	5	6	7	8
難易度1 (メカニックパートのスピード) DIFFICULTY 1 (SPEED OF MECHANIC BIRD)	易 MODERATE				OFF	OFF			
	↓ DIFFICULT				ON	OFF			
	↓ MORE DIFFICULT				OFF	ON			
	難 TOP DIFFICULT				ON	ON			
難易度2 (敵の数とスピード) DIFFICULTY 2 (ENEMIES' NUM- BERS AND SPEED)	易 EASY						ON	OFF	
	↓ MODERATE						OFF	OFF	
	↓ DIFFICULT						OFF	ON	
	難 MORE DIFFICULT						ON	ON	
スペシャルコイン出現率 RATIO OF SPECIAL COIN APPEARANCE	易 EASY								OFF
	難 DIFFICULT								ON

※ディップSW2のSW1, SW2, SW3は未使用です。必ずOFFにして使用して下さい。

●SW 1, SW 2, SW 3 of Dip SW 2 are not used. Be sure to keep them in the OFF position when using.