

Turgen System
version 8.4.13

Contents

I	Turgen System	8
1	Introduction	8
1.1	Mission	8
1.2	Primary Functionality	8
1.3	Auxiliary Functionality	8
1.4	Support for Standard Tape Records	8
1.5	Hardware that can be used	8
1.6	Target Audience	8
1.7	Program Characteristics	8
1.8	System Requirements	9
1.9	Binary Files	9
1.10	Abbreviations	9
1.11	Glossary	10
1.12	Similar Utilities	10
2	Distribution and Installation	10
2.1	Installation Requirements	10
2.2	Distribution	10
2.3	Installation and Directories	10
3	Operations Guide	11
3.1	Starting Turgen System	11
3.2	Program Controls	11
3.3	Conversion of Files	12
3.3.1	Playlist Items	12
3.3.2	Working with Playlist	12
3.3.3	Editing and Creating Playlist Items	13
3.4	Wizard for Binary Files	14
3.5	Output	14
3.5.1	Output of Electric Signal into WAVE File	14
3.5.2	Output of Electric Signal to Sound Card.	14
3.5.3	Output of Tape Image	15
3.6	Input/Output matrix	15
3.7	Pulse Corrections	15
3.7.1	Motivation	15
3.7.2	Permanent Pulse Corrections	16
3.7.3	Immediate Pulse Corrections	16
3.8	Silence Lists	16
3.8.1	Overview	16
3.8.2	Silence List Syntax	16
3.8.3	Examples	16
3.8.4	User Interface	17

4 Program Configuration Facility	17
4.1 Changing Configuration	17
4.2 General Configuration Entries	17
4.3 Output of Electric Signal to Sound Card	17
4.4 Output of Electric Signal to WAVE File	18
4.5 Output of Tape Images	18
5 Advanced Settings	19
5.1 Active Plugins	19
5.2 Repository of Pulses	19
6 Tools	19
6.1 Merging Segments of Binary Files	19
6.1.1 Introduction	19
6.1.2 Merging Segments Step by Step	19
6.2 Turbo Decoder	20
6.2.1 Overview	20
6.2.2 Preparing the Decoder	21
6.2.3 Decoding Files	21
6.2.4 Monitor Mode	22
6.3 Embedding Tokenized BASIC Files to Binary Files	22
6.3.1 Motivation	22
6.3.2 Operations	22
6.4 Tape Image Extractor	23
6.4.1 Operations	23
7 Hardware that Can Be Used with Turgen System	24
7.1 Data Recorders and Compact Cassettes	24
7.2 Cassette Adapters	24
7.3 MEGA-CD Interface (CD-LINK)	24
7.4 SIO2PC and ATART	25
7.5 Loading Binary Files with Replacement Devices	25
8 Postprocessing	25
8.1 Postprocessing of WAVE Files	26
8.2 Postprocessing of Tape Images	26
8.3 Examples	26
9 Data Transfer via Serial Port in Collaboration with CAS COM Utility	26
9.1 Introduction	26
9.2 Command Line Considerations	26
10 Hints and Tips	27
II BUILT-IN PLUGINS	27

11 Turbo 2000 and Super Turbo	27
11.1 Characteristics	27
11.2 Conversion types	28
11.3 Header Block	29
11.4 Inserting Silence After INIT Segments	29
11.5 Prepending Universal Turbo Loader	29
11.6 Using Custom Binary Loaders	29
11.7 Configuration Entries	29
12 Turbo 2000 - Kilobyte Blocks	30
12.1 Characteristics	30
12.2 User Interface	30
12.3 Binary Loaders	31
12.4 Prepending Universal Turbo Loader	31
12.5 Configuration Entries	31
13 B-TAPE	32
13.1 Characteristics	32
13.2 User Interface	32
13.3 Binary Loaders	33
13.4 Prepending Universal Turbo Loader	33
13.5 Configuration Entries	33
14 KSO Turbo 2000	33
14.1 Characteristics	33
14.2 User Interface	34
14.3 Configuration Entries	34
15 Turbo Blizzard	35
15.1 Characteristics	35
15.2 User Interface	35
15.3 Configuration Entries	35
16 Turbo ROM	36
16.1 Characteristics	36
16.2 User Interface	36
16.3 Conversion of Turbo ROM Compatible Binary Files	36
16.4 Conversion of Binary Files	37
16.4.1 Processing	37
16.4.2 User Interface	37
16.5 Conversion of Tokenized BASIC Files	37
16.6 Prepending Loaders	37
16.7 Configuration Entries	37
17 Atari Super Turbo	38
17.1 Characteristics	38
17.2 User Interface	38
17.3 Configuration Entries	38

18 Hard Turbo	39
18.1 Characteristics	39
18.2 User Interface	39
18.3 HTBL+ Loader	40
18.4 Configuration Entries	40
19 Lower Silesia Turbo 2000	40
19.1 Characteristics	40
19.2 Conversion Types	41
19.3 User Interface	41
19.4 Configuration Entries	41
20 Standard	42
20.1 Characteristics	42
20.2 User Interface	42
20.3 Conversion of Monolithic Binary Files	42
20.4 Conversion of Segmented Binary Files	42
20.4.1 Processing	42
20.4.2 Binary Loader Skeleton	44
20.4.3 User Interface	44
20.5 Conversion of Plain Data files	44
20.6 Conversion of Tokenized BASIC Files	44
20.6.1 Formats	44
20.6.2 User Interface	44
20.7 Configuration entries	44
21 Tape Image	44
 III TURBO SYSTEMS	 45
22 Introduction	45
23 Information encoding	45
24 Turbo Systems from Former Czechoslovakia	45
24.1 Common Information	45
24.1.1 Switching Data Recorder to Turbo Mode	45
24.1.2 Single Purpose or CIO	45
24.1.3 Pilot Tone and Data Separation	46
24.2 Turbo 2000	46
24.2.1 Description	46
24.2.2 Header block	46
24.2.3 Data block	46
24.2.4 Timing	46
24.2.5 Loaders	47
24.3 Super Turbo	48
24.3.1 Description	48
24.3.2 Header block	48
24.3.3 Data block	48

24.3.4Timing	48
24.3.5Loaders	48
24.4Turbo 2000 - kilobyte blocks	49
24.4.1Description	49
24.4.2Header block	49
24.4.3Data blocks	49
24.4.4Timing	49
24.4.5Loaders	49
24.5Turbo Tape	50
24.5.1Description	50
24.5.2Tape modes	50
24.5.3Structure of the blocks	50
24.5.4Timing	50
24.6B-TAPE	50
24.6.1Description	50
24.6.2Tape modes	51
24.6.3Structure of the blocks	51
24.6.4Timing	51
24.6.5Notes	51
25 Turbo systems from Poland	52
25.1KSO Turbo 2000 and Turbo 2000F	52
25.1.1Description	52
25.1.2Header block	52
25.1.3Data block	52
25.1.4Timing	52
25.2Atari Super Turbo (AST)	52
25.2.1Description	52
25.2.2AST File Format	53
25.2.3BUT File Format	53
25.2.4AST Header Block	53
25.2.5BUT Loader Header Block	53
25.2.6BUT Loader Data Block	53
25.2.7AST and BUT Data Block	53
25.2.8BUT Termination Segment Header	54
25.2.9Timing	54
25.3Turbo Blizzard	54
25.3.1Description	54
25.3.2Header block	54
25.3.3Data block	54
25.3.4Timing	54
25.4Turbo ROM	55
25.4.1Description	55
25.4.2Header Block for Binary Files	55
25.4.3Data Block for Binary Files	55
25.4.4Header block for BASIC files	55
25.4.5Data Block for BASIC Files	56
25.4.6Timing	56

25.5Hard Turbo	56
25.5.1Description	56
25.5.2Main Header Block	56
25.5.3Segment Header Block	57
25.5.4Segment Data Block	57
25.5.5Timing	57
25.6Lower Silesia Turbo 2000	57
25.6.1Description	57
25.6.2Auto Turbo Format	57
25.6.3Unknown Exterminator Unprotected Binary Format and Protected Binary Format (UE UBF and UE PBF)	57
25.6.4Auto Turbo Header block	58
25.6.5Auto Turbo Data block	58
25.6.6UE PBF Dummy RUN block	58
25.6.7UE UBF and UE PBF Segment Header Block	58
25.6.8UE UBF and UE PBF Segment Data Block	58
25.6.9UE UBF and UE PBF Termination Segment Header	58
25.6.10Timing	58

Part I

Turgen System

1 Introduction

1.1 Mission

Turgen System allows you to transfer games and programs from PC to your 8-bit Atari computer using just a data recorder.

1.2 Primary Functionality

Turgen System converts files to various turbo systems and also to standard tape records.

Output of the program is a *WAVE file*, an *electric signal on the output of the sound card*, or a *tape image*.

Turgen System provides special support for conversion of segmented binary files, which includes a wizard and a set of binary loaders.

1.3 Auxiliary Functionality

- Turbo decoder that can be used to retrieve information from tapes
- Reading of tape images
- Data transfer via serial port in collaboration with CAS COM utility
- Tool for merging segments of binary files
- Tool for embedding tokenized BASIC files to monolithic binary files
- Tape image extractor tool that extracts data from tape images

1.4 Support for Standard Tape Records

Standard tape records (FSK) are fully supported. Tape images with *baud*, *data*, and *fsk* chunks can be read by the Tape image plugin. Monolithic binary files, segmented binary files, BASIC files, and plain data files can be converted to standard tape records by the Standard plugin. For more information, refer to sections 20 and 21.

1.5 Hardware that can be used

Data recorders with or without turbo upgrades, compact cassettes, data recorder and compact cassette replacement devices, MEGA-CD interface (CD-LINK), SIO2PC, ATART.

Important information. If you are using devices other than data recorder and compact cassettes, please read section 7.5 that contains vital information about how to use such devices. Then read section 3.8.

1.6 Target Audience

Users of Atari 8-bit computers who use data recorders or replacement devices.

1.7 Program Characteristics

Turgen System is written in Java™ 2 programming language and it is a free software distributed under the terms of GNU General Public License, version 2.

1.8 System Requirements

- Java Runtime Environment 1.5.0 or newer
- Solaris, Microsoft Windows 98/2000/ME/XP/Vista/7/8, GNU/Linux, Mac OS

1.9 Binary Files

Turgen System provides extensive support for processing of *Atari DOS 2 Binary Files*. These files will be referenced as *binary files*.

A binary file is a file with precisely defined internal structure that is mainly used to store *programs* for Atari 8-bit computers.

Header. A binary file always starts with a two-byte header. Both bytes have a value of 255 (\$FF).

Segments. A binary file contains *segments*.

A segment is a block of data prefixed with a *segment header*. The segment header holds two 16-bit addresses (segment start address and segment end address). These two addresses determine the addresses to which the segment data will be loaded. The segment header can be optionally prefixed with two bytes of value 255 (\$FF).

Special segments. Segments loaded to certain addresses have a special meaning. These segments are described in table 1.

Addresses	Segment description
736 - 737	RUN segment. The segment holds address that specifies where to jump when all segments of a given binary file are loaded.
738 - 739	INIT segment. The segment holds address of a subroutine that is executed immediately after the INIT segment is loaded.
736 - 739	RUNINIT segment. A combination of the previous two segments.

Table 1: Segments

DATA Segments. Segments that do not have a special meaning are called **DATA** segments.

Monolithic Binary File. A binary file that consists of exactly one data segment and at most one RUN segment. A structure of such binary file is very simplistic. It isn't much more than one block of data.

Segmented Binary File. A binary file that is not monolithic.

Binary Loader. A program, or routine (usually part of an operating system) that loads and executes binary files.

Binary Load. Name for the process of loading and running of a binary file. This process is performed by a binary loader.

1.10 Abbreviations

JRE. Java Runtime Environment.

JDK. Java Development Kit.

1.11 Glossary

Cassette recorder. Consumer electronics device designed to read or write electric signal to or from compact cassettes.

Data recorder. Device designed to read or write signal to or from compact cassettes, specially designed to be connected to computers, for example Atari XC-12.

Program directory. Directory or folder where Turgen System is installed to. Special symbol <TSDIR> is also used to reference this directory.

Configuration directory. Directory or folder where Turgen System stores user configuration files. Special symbol <CFGDIR> is also used to reference this directory.

Java home directory. Directory or folder where JRE (or JDK) resides. A special symbol <JAVAHOME> is also used to reference this directory.

Turbo system. This term denominates a system designed to speed up data transfer of the original Atari data recorder. A typical turbo system consist of three parts: 1. Hardware modification of data recorder, 2. Software exploiting such hardware modification, 3. File format. There is not necessarily 1:1:1 relation. For one hardware modification of data recorder, there can exist more software or more file formats.

1.12 Similar Utilities

Turgen System provides similar functionality as the following utilities: A8CAS, a8cas-util, CAS2WAV, XEX2CAS 2.4, and ATART.

2 Distribution and Installation

2.1 Installation Requirements

Turgen System requires Java Runtime Environment to be installed.

Before installing Turgen System, download and install the Java Runtime Environment. Download JRE from the following address: <http://java.com/en/download/index.jsp>. It is recommended to download the newest available version of JRE for your operating system.

2.2 Distribution

Turgen System is distributed in three packages:

1. Installation package for Microsoft Windows
2. Operating system independent binary package
3. Source code package

2.3 Installation and Directories

To install Turgen System, decompress the operating system independent binary package or run the installation package to create the program directory and populate it with files.

The program directory contains all files required to run Turgen System. Turgen System requires read-only access to the files in the directory.

The configuration directory is created by Turgen System when needed (usually when started for the first time). Its location is operating system dependent and Turgen System requires read-write access the directory in order to be fully functional.

3 Operations Guide

3.1 Starting Turgen System

Starting from Command Line

Program code of the Turgen System is located in the `turgen.jar` file. To run Turgen System, run the Java launcher and specify that the program code is in the `turgen.jar` file, using the following commands.

`<JAVAHOME>/bin/java -jar <TSDIR>/turgen.jar` on Unix-like systems or
`<JAVAHOME>\bin\javaw.exe -jar <TSDIR>\turgen.jar` under Microsoft Windows.

Microsoft Windows

Use the desktop or start menu shortcuts created by the installer or execute the `turgen.exe` launcher in the program directory.

Other Operating Systems

Start from command line or create launchers or shortcuts using your desktop environment

Command Line Parameters

One command line parameter is accepted - a file that accommodates a playlist.

Log File

Exceptions, traces or other important diagnostic information is stored into the `turgen.log` file located in the configuration directory. This file is recycled when it exceeds size of 4 MB.

3.2 Program Controls

Main Menu and Playlist

The main menu is located on the top of the program window. Almost all functions are accessible from the main menu.

In the middle of the program window, there is the *playlist* that accommodates information what files are to be converted and how they will be converted.

Main Control Buttons

Under the main menu, there is a toolbar, where the *main control buttons* are located. The most used functions can be invoked using these buttons. Every button has its icon and name. The buttons are depicted in table 2.

Progress Monitoring Panel

This panel is located in the bottom part of the program window. Conversions of files can be monitored or stopped here. At the very bottom of the program window, there is a status bar.











Icon	Name	Icon	Name
	Add item to playlist		Move 1 playlist item up
	Edit selected playlist item		Move 1 playlist item down
	Remove selected playlist items		Generate WAVE file
	Select all playlist items		Generate AUDIO directly
	Generate tape image		Wizard for binary files

Table 2: Main Control Buttons

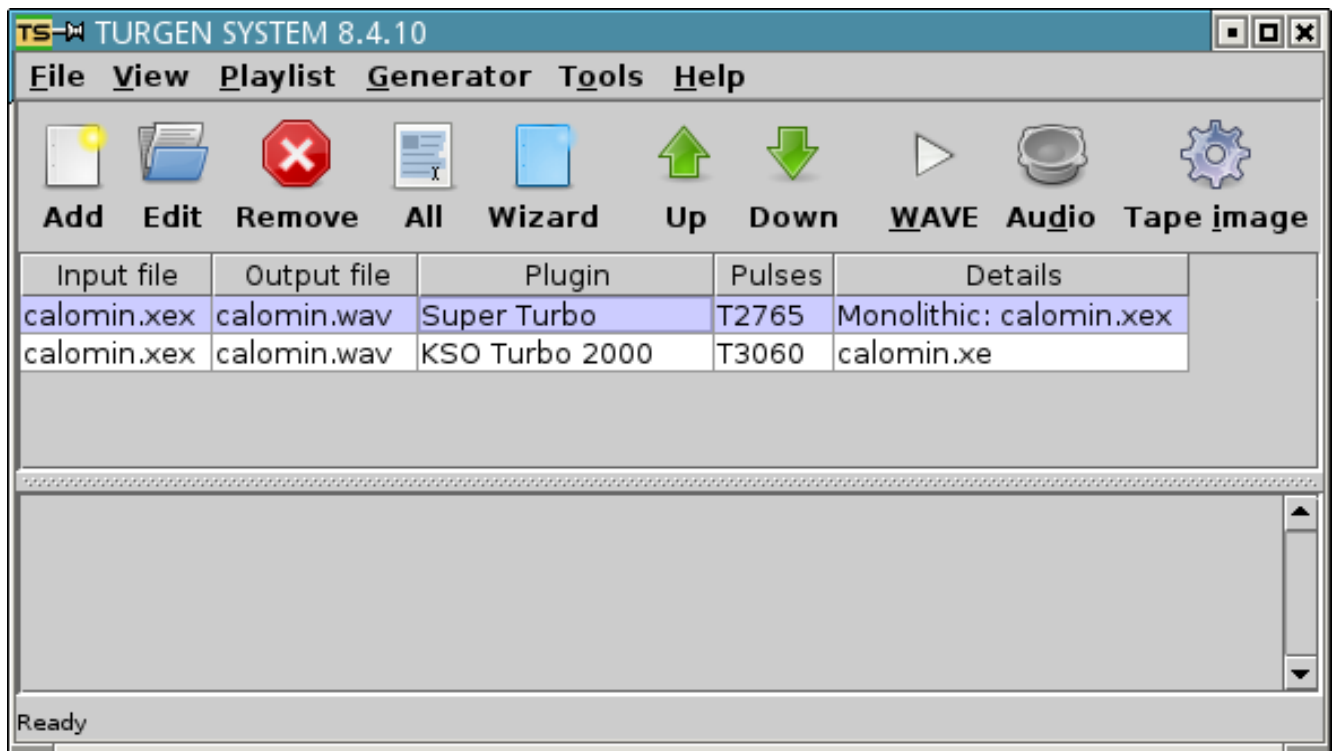


Figure 1: Program Window

3.3 Conversion of Files

3.3.1 Playlist Items

To convert a file, Turgen System requires information about the conversion which includes input file name, input and output format, output file name, what loader to prepend and various other parameters. That information is accommodated in the *playlist items*. The Playlist items are elements of the *playlist*.

3.3.2 Working with Playlist

To work with the playlist, use the main control buttons or menu items from the *Playlist* menu.

To add a playlist item to the playlist, click the *Add item to playlist* main control button. To edit playlist items, click the *Edit selected playlist item* main control button. To remove selected playlist items, click the *Remove selected playlist items* main control button.

To select playlist items, use your keyboard or your mouse. To select all playlist items, click the *Select all playlist items* main control button.

To move single playlist items use *Move 1 playlist item up* and *Move 1 playlist item down* buttons.

To load or save the playlist, use the *Load* and *Save* items from the *Playlist* menu.

3.3.3 Editing and Creating Playlist Items

Turgen System provides a dialog for creating and editing playlist items. The dialog is depicted on figure 2.

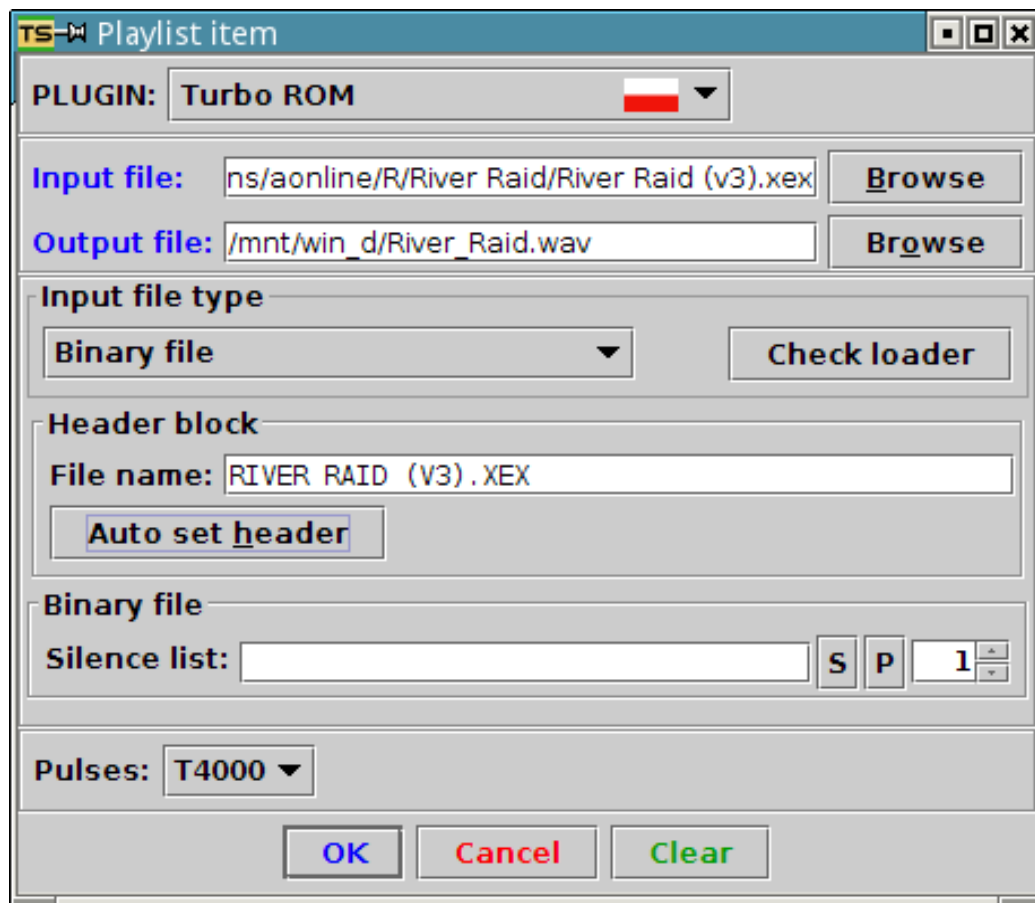


Figure 2: Manipulating Playlist Item

Use the *PLUGIN* combo box to select a plugin that will be used for conversion. Note the national flags that can help you distinguishing from where a particular turbo system comes from.

Use the common panel at the top of the dialog to choose the input and the output file.

To display a dialog with information about input file, click the *Input file* label. To populate the output file text field automatically, click the *Output file* label. To display a file chooser dialog, click the *Browse* buttons.

In the middle part of the dialog, there are controls specific for the selected plugin. These controls are described in part II.

Use the buttons at the bottom to commit or cancel the changes you have made to the playlist item. Click the *Clear* button to reset controls of the dialog.

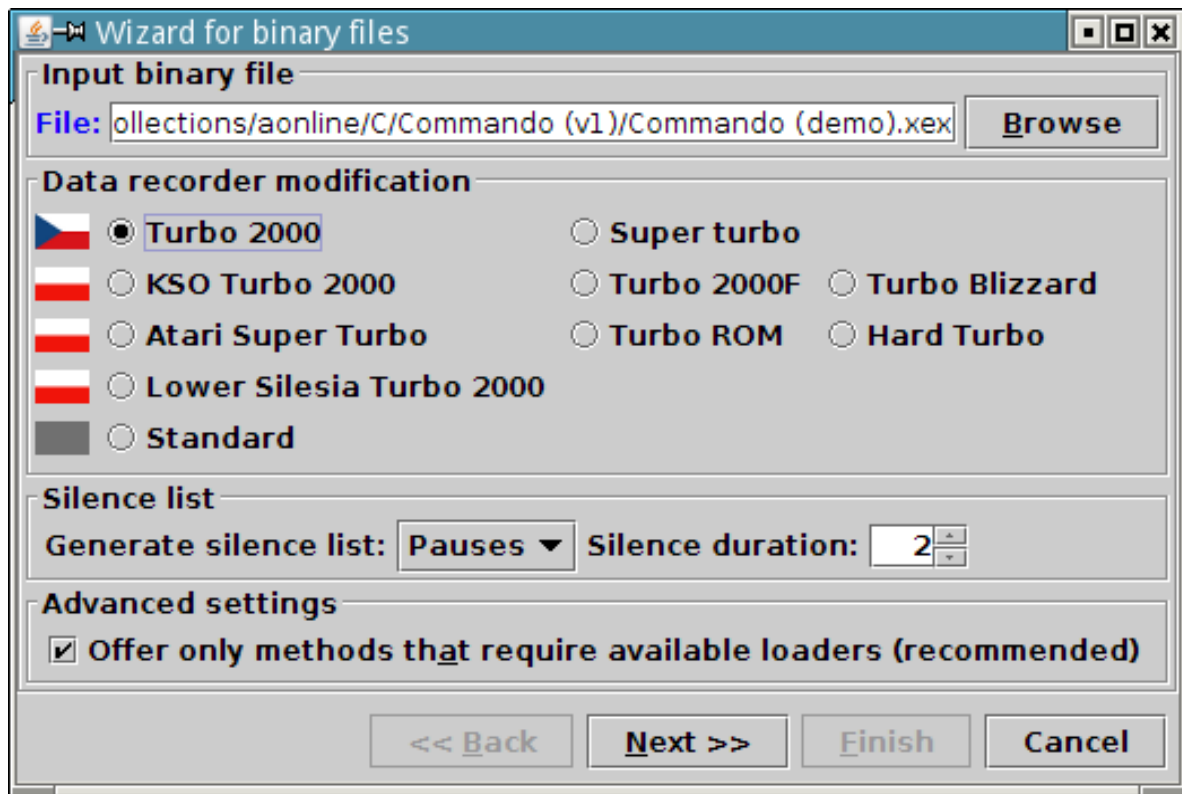


Figure 3: Wizard for Binary Files - Step 1

3.4 Wizard for Binary Files

The Wizard for binary files provides convenience when converting binary files.

To start the wizard, click the *Wizard for binary files* main control button.

In the first step, specify a binary file that you want to convert and what are the capabilities of your data recorder. In the second step, choose one of the conversion methods offered by the wizard, output file name and pulses.

The offered conversion methods are ordered by the number of pilot tones or leaders. The wizard also checks (finitely of course) whether the binary file will destroy a built-in binary loader that will be prepended. The wizard can also automatically generate silence lists (refer to section 3.8 for more information).

3.5 Output

3.5.1 Output of Electric Signal into WAVE File

To output electric signal to a WAVE file, select at least one playlist item and click the *Generate WAVE file* main control button. A separate thread for each selected playlist item is created. These threads run in parallel and it is possible to stop them using the *Stop* buttons that will appear in the progress monitoring panel. The output files are overwritten without a warning.

3.5.2 Output of Electric Signal to Sound Card.

To output electric signal to the sound card, select at least one playlist item and click the *Generate AUDIO directly* main control button. Playlist items are processed sequentially. It is possible to stop the output using *Stop* and *Stop all* buttons that will appear in the progress monitoring panel. To resume an output that has been paused, click the *Resume* button.

You can press CTRL+SHIFT when clicking the *Generate AUDIO directly* main control button to output the electric signal in an infinite loop. This can help you to easily find appropriate signal amplitude when using a cassette adapter.

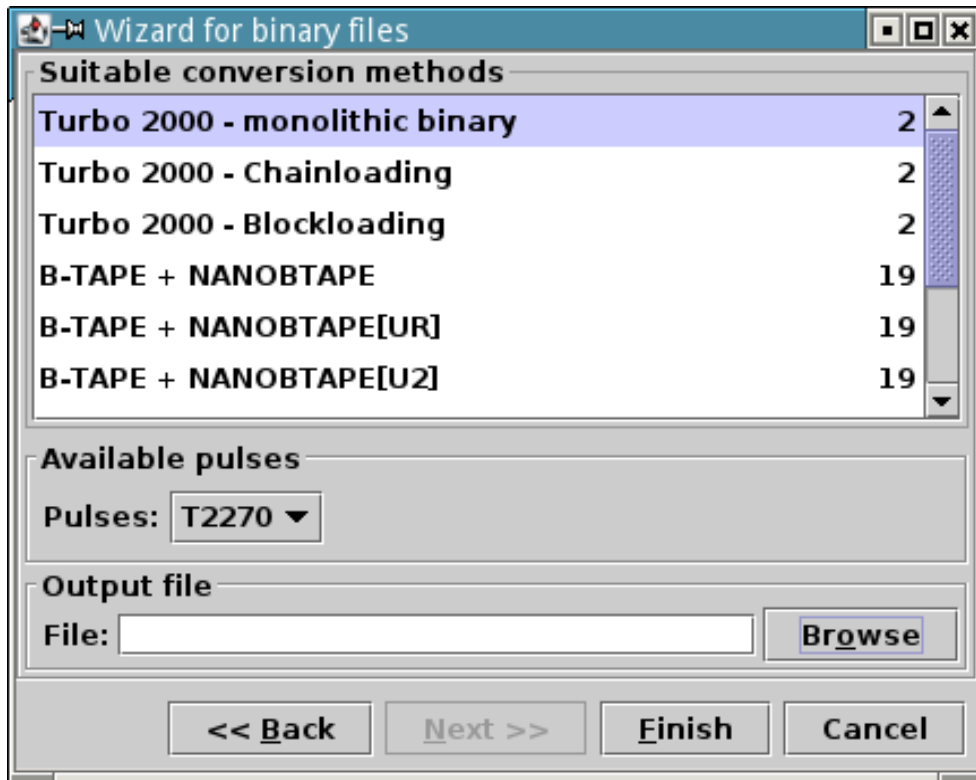


Figure 4: Wizard for Binary Files - Step 2

3.5.3 Output of Tape Image

To output a tape image, select at least one playlist item and click the *Generate tape image* main control button. Playlist items are processed sequentially. The output files are overwritten without a warning. The format of tape image can be configured using Program configuration facility described in section 4.

Note that tape images with `pwmX` and especially `trXX` chunks are not widely supported by available utilities or devices.

3.6 Input/Output matrix

Conversion capabilities of Turgen System are enumerated in the following table.

Input	Wave file	Sound card	Tape Image with trXX chunks	Tape image with pwmX chunks
Regular file	YES	YES	YES	YES
Binary file	YES	YES	YES	YES
Tape image (trXX chunks)	YES	YES	Passed through	YES
Tape image (pwmX chunks)	YES	YES	NO	Passed through
Tape image (baud , fsk chunks)	YES	YES	Passed through	Passed through

3.7 Pulse Corrections

3.7.1 Motivation

Turgen System has a repository of pulses for all supported turbo systems (see 5.2). The values in the repository have been tested using patched Atari800 emulator provided by the A8CAS project. However, users of Turgen System already reported minor problems when using real hardware. In light of this problems, an ability to comfortably correct the pulses is highly desired.

3.7.2 Permanent Pulse Corrections

To make permanent corrections of pulses, use the Program configuration facility. The plugins that support permanent pulse corrections are KSO Turbo 2000, Atari Super Turbo, Turbo ROM, and Turbo Blizzard.

3.7.3 Immediate Pulse Corrections

You can temporarily correct the pulses for all plugins. Select the *Immediate pulse corrections* item from the *Generator* menu. A special panel appears.

Use the controls on the special panel to adjust durations of the pulses. You can make the pulses narrower (negative values) or wider (positive values). One unit represents 1/44100 s.

Note that immediate pulse corrections always override any permanent corrections.

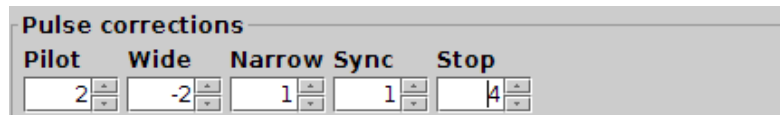


Figure 5: Pulse Corrections

3.8 Silence Lists

3.8.1 Overview

The silence lists allow comfortable usage of devices other than data recorders and compact cassettes (refer to section 7.5).

The silence lists allow the following:

- Insert silence of defined duration after a block that contains one or more INIT segments
- Pause output of electric signal to the sound card after a block that contains one or more INIT segments

The silence lists are part of the playlist items (refer to section 3.3.1).

3.8.2 Silence List Syntax

A silence list consists of silence specifications (SPECs) separated by commas:

`SILENCE_LIST:=<SPEC>,<SPEC>,...,<SPEC>`

A silence specification is a number followed by optional P suffix or just a P suffix which is an equivalent of 1P syntax:

`SPEC:=n[P]|P`

where n is the generated silence duration in seconds. The P suffix indicates that output of electric signal to the sound card will be paused.

3.8.3 Examples

Silence List	Explanation
1,3,0,4	1 second of silence after 1st INIT segment 3 seconds of silence after 2nd INIT segment No silence after 3rd INIT segment 4 seconds of silence after 4th INIT segment
3,2P,P	3 seconds of silence after 1st INIT segment 2 seconds of silence after 2nd INIT segment, output of electric signal to sound card will be paused 1 second of silence after 3rd INIT segment, output of electric signal to sound card will be paused

3.8.4 User Interface

To create a silence list, you can use the Silence list panels. Enter the silence specifications in the text field, or click the *S* or *P* buttons to populate the list automatically (the input binary file will be analyzed and a silence specification will be created for each INIT or RUNINIT segment found). Use the spinner to set the duration of the automatically generated silence specifications.



Figure 6: Silence List Panel

4 Program Configuration Facility

The Program configuration facility provides various program modules with configuration capabilities. Program configuration consists of *configuration entries* that are grouped in *configuration classes*.

4.1 Changing Configuration

To change program configuration, use the *Preferences* dialog. To make configuration changes permanent, save the configuration by selecting the *Save preferences* menu item from the *Tools* menu, or click the *OK & Save* button when exiting the dialog.

4.2 General Configuration Entries

Turgen System/GUI Look and feel

Look and feel of the user interface, fully qualified class name. If the entry is empty, the default look and feel is used.

Standard looks and feels:

`javax.swing.plaf.metal.MetalLookAndFeel` (all platforms, default)

`com.sun.java.swing.plaf.motif.MotifLookAndFeel` (all platforms)

`com.sun.java.swing.plaf.windows.WindowsLookAndFeel` (Microsoft Windows only)

`com.sun.java.swing.plaf.gtk.GTKLookAndFeel` (only when GTK+ 2.2 or newer is installed)

`com.sun.java.swing.plaf.mac.MacLookAndFeel` (only Mac, untested)

`com.sun.java.swing.plaf.nimbus.NimbusLookAndFeel` (new since JDK 1.6 update 10)

Turgen System/favorite output directory

Favorite directory for output files.

4.3 Output of Electric Signal to Sound Card

Audio output/Silence between files

Length of silence in milliseconds generated between playlist items.

Audio generator/Amplitude

Amplitude of the signal. 0-100%. It is not recommended to set the value too low.

Audio generator/Channels

Number of channels.

Audio generator/Bits per sample

Number of bits per one sample.

Audio generator/Signed samples

Indicates whether to use signed samples.

Audio generator/Initial silence

Length of silence generated after sound card initialization, unit is 0.1 of second. This may be needed, because the very first data sent to the sound card can result in unwanted signals.

Audio generator/Buffer size

Size of the buffer for data being sent to the sound card. Increasing this value can help when there are under runs and output from the sound card is repeatedly interrupted.

Audio generator/Signal in right channel only

If the number of channel is set to two, signal will be generated to the right channel only.

Audio generator/Do not modulate standard records

If set to true, standard tape records will be generated without modulation. The resulting signal will be the same as it would be on the DATA-IN pin of the SIO port. This option should allow to pass standard tape records through turbo decoder circuitry.

Audio generator/Use double buffering

If set to true, an internal buffer is used to store the electric signal before it is sent to the sound card. This reduces number of round-trips between Turgen System and operating system's native sound facilities.

Audio generator/Use harmonic pulses

If set to true, harmonic pulses are generated instead of rectangular pulses. This can be useful when the electric signal is passed through a device that distorts signal with steep edges. Note that harmonic pulses will probably not work with transfer speeds higher than 3000 bd.

4.4 Output of Electric Signal to WAVE File

WAVE generator/Amplitude

Amplitude of the signal. 0-100%. It is not recommended to set the value too low.

WAVE generator/Channels

Number of channels.

WAVE generator/Bits per sample

Number of bits per one sample.

WAVE generator/Postprocessing command

Command line for postprocessing. For more information refer to section 8.1.

WAVE generator/Change extension to .wav

Extension of output files will be changed to .wav in intelligent way if set to true.

WAVE generator/Signal in right channel only

If the number of channel is set to two, signal will be generated to the right channel only.

WAVE generator/Do not modulate standard records

If set to true, standard tape records will be generated without modulation. The resulting signal will be the same as it would be on the DATA-IN pin of the SIO port. This option should allow to pass standard tape records through turbo decoder circuitry.

WAVE generator/Use harmonic pulses

If set to true, harmonic pulses are generated instead of rectangular pulses. This can be useful when the electric signal is passed through a device that distorts signal with steep edges. Note that harmonic pulses wont probably work with transfer speeds higher than 3000 bd.

4.5 Output of Tape Images

Tape image output/Change extension to .cas

Extension of output files will be changed to .cas in intelligent way if set to true.

Tape image generator/Postprocessing command

Command line for postprocessing. For more information refer to section 8.2.

Tape image generator/Auto create temporary files

If the output file is not specified and this entry is set to true, temporary file is created automatically. This is useful for postprocessing.

Tape image generator/Tape image chunks

This entry is used to specify, what type of chunks will be placed into the generated tape images. trXX style chunks or pwmX can be specified. trXX style chunks are used by CASCOS , pwmX style chunks are used by A8CAS.

5 Advanced Settings

5.1 Active Plugins

The list of plugins that will be loaded is stored in the `plugins.list` file. To disable a plugin, remove or preferably comment-out (using the `#` character) the corresponding line. To change the order of the plugins (that is what users from Poland may want to do), change order of the lines.

Note 1: Some plugins process trXX tape image chunks. If a plugin is disabled, given trXX tape image chunk cannot be processed.

Note 2: Some plugins allow to prepend a loader as a standard cassette boot file. This function will not work when the Standard plugin is disabled.

5.2 Repository of Pulses

The repository of pulses is stored in `pulses/pulses.list` file. Repository can be modified, directions are present in the file itself as comments. It is not recommended to modify the repository without serious reasons. Changes take effect after Turgen System is restarted.

6 Tools

6.1 Merging Segments of Binary Files

6.1.1 Introduction

Turgen System provides a tool that merges segments of binary files into one segment and adds extra code that replaces the INIT segments. This allows to convert segmented binary files that meet certain conditions to monolithic binary files.

Conditions that the segmented binary files must meet are the following: 1. Data segments must not overlap, 2. Routines called by the jump segments must work properly when all data segments are already loaded, 3. There must be place for code that replaces the INIT segments. Usually, the only way to test these conditions is to run the monolithic binary file.

6.1.2 Merging Segments Step by Step

Display the dialog for merging segments of binary file by selecting item *Merge segments of binary file* from the *Tools* menu.

Enter file name in the *Input file* text field and click the *Analyze* button. The list of segments will be populated. Then enter file name in the *Output file* text field and specify address of the code that will replace the INIT segments. The code is needed only when there are INIT or RUNINIT segments in the binary file.

Click the *Merge* button to merge the segments and to create the output binary file. Then test the binary file.

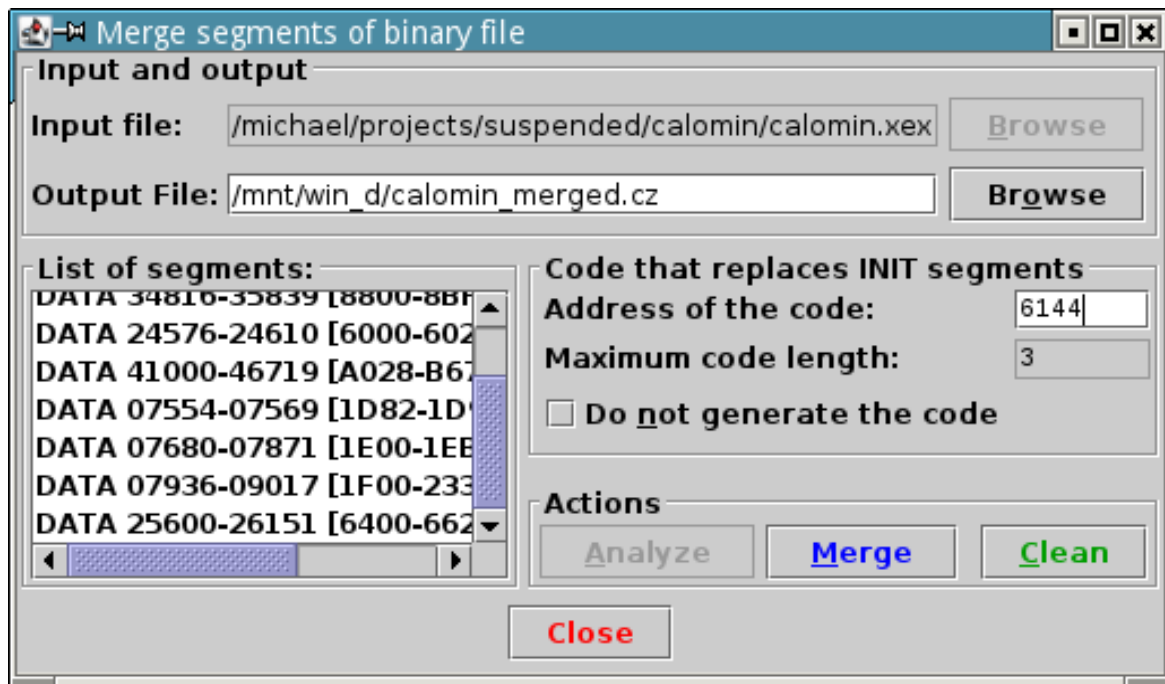


Figure 7: Merging segments of binary file

6.2 Turbo Decoder

6.2.1 Overview

The Turbo Decoder is a tool designed to retrieve data from compact cassettes. The decoding algorithm is a simple Java rewrite of turbo loaders from assembler 6502.

The electric signal can be read from WAVE files. When creating WAVE files, it is recommended to set the cassette recorder to get maximum signal amplitude. The WAVE file must be in the following format: PCM, 1 or 2 channels, 44100-96000 Hz, 8 or 16 bits per sample.

Another possibility is to read the electric signal directly from the sound card. This source of electric signal is supported, but not recommended as it requires error-prone processing of the signal in real time.

Turbo systems supported by the decoder are the following: Turbo 2000, Turbo 2000 - kilobyte blocks, Super Turbo, Turbo Tape and B-TAPE, KSO Turbo 2000, Turbo Blizzard, Turbo ROM, Atari Super Turbo (AST format only), Hard Turbo, and Lower Silesia Turbo 2000.

The decoder can also work in so called "Monitor mode" that allows you to read raw turbo blocks.

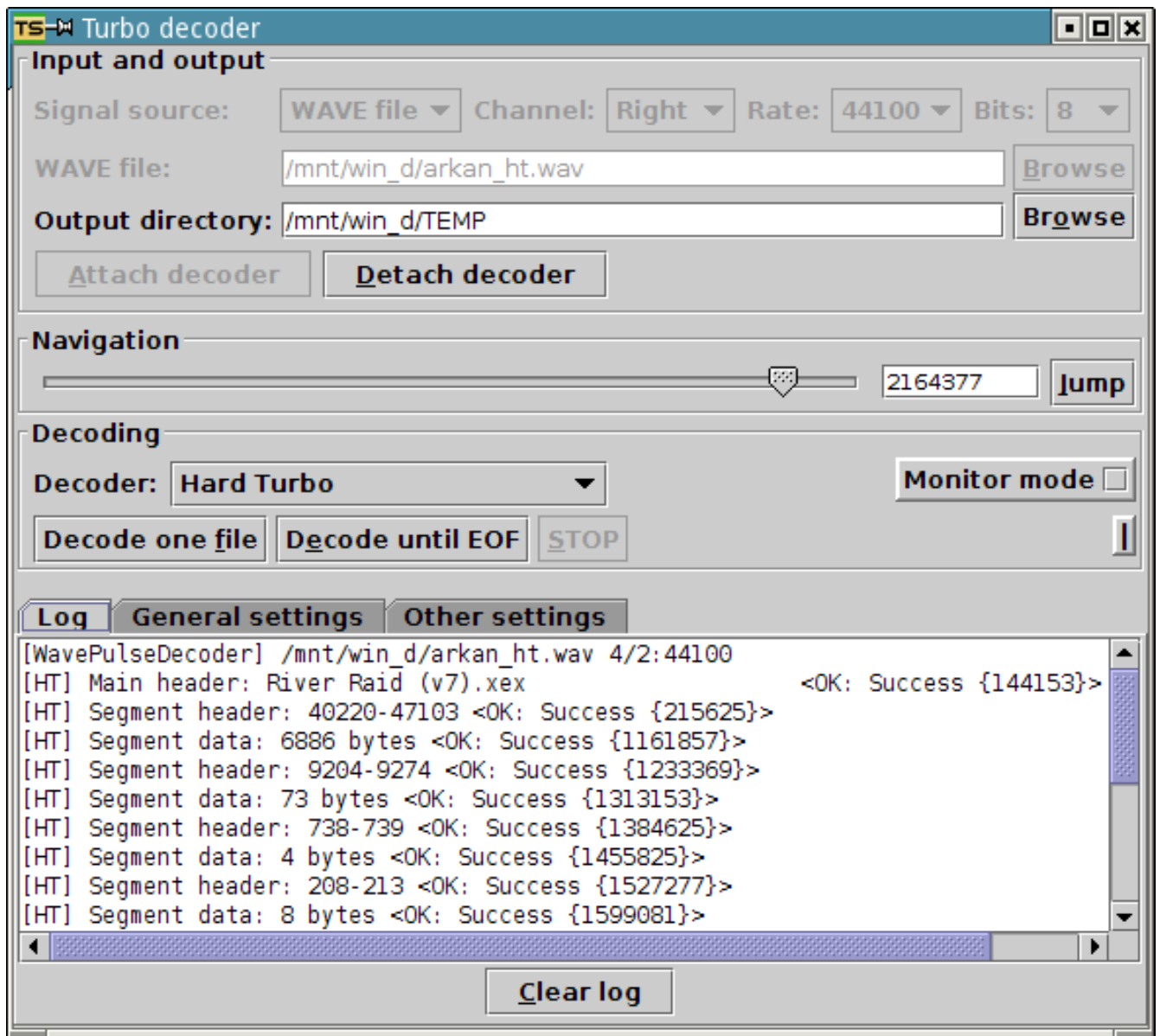


Figure 8: Turbo decoder

6.2.2 Preparing the Decoder

Open the decoder window by selecting the *Turbo decoder* item from the *Tools* menu.

Select a source of the electric signal using the *Signal source* combo box.

If the source of the electric signal is a WAVE file, fill-in the WAVE file name and select input channel using the *Channel* combo box.

If the source of the electric signal is the sound card, select input channel using the *Channel* combo box, select the sample rate using the *Rate* combo box, and select number of bits per sample using the *Bits* combo box.

Fill-in the output directory and click the *Attach Decoder* button. The decoder is now ready to decode the electric signal.

6.2.3 Decoding Files

To set various decoding parameters, use controls on the *Settings* tab.

Use the *Navigation* panel to specify current position in the WAVE file.

The controls on the *Decoding* panel are devoted to perform decoding. Use the combo box *Decoder* to select a turbo system.

To start decoding of one file or all files until the end of the WAVE file, click *Decode one file* or *Decode until EOF* buttons. To stop the decoding process, press the *Stop* button.

You can see the results of decoding in the *Log* tab. If you use a digitized sound editor, you can use the sample numbers enclosed in the curly braces.

If you want to work with different WAVE file, or to select another source of the electric signal, detach the turbo decoder using the *Detach decoder* button.

If the decoder stops responding due to a bad sound card setup, press the *Stop* button while pressing the SHIFT key. This is called emergency stop. After an emergency stop, the decoder must be detached and attached to be ready again.

6.2.4 Monitor Mode

To work in the monitor mode, select the *Monitor mode* check box. In the Turbo monitor mode, turbo decoder reads raw blocks of the selected turbo system. If a block is found, it is decoded until an error occurs or end of block is encountered. No checksums are verified and internal format of the block is not validated.

To decode a single block, click the *Decode one file* button. To decode all blocks until end of file, click the *Decode until EOF* button.

The monitor mode is available for special purposes like decoding data stored in non-standard formats, retrieving corrupted files etc.

6.3 Embedding Tokenized BASIC Files to Binary Files

6.3.1 Motivation

Some turbo systems define file formats than cannot accommodate tokenized BASIC files. In order to circumvent such limitation, Turgen System has a tool that embeds tokenized BASIC files in monolithic binary files. **The purpose of the tool is embedding, not compilation.**

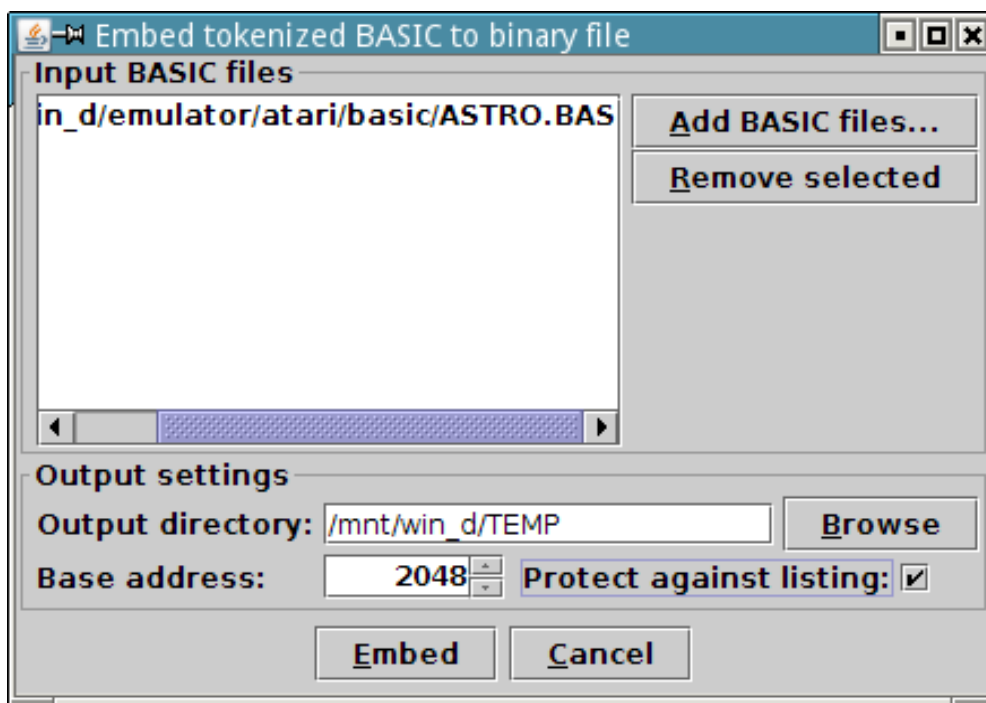


Figure 9: Embedding tokenized BASIC files to binary files

6.3.2 Operations

Open the embedding tool window by selecting the *Embed BASIC to binary file* item from the *Tools* menu.

Click the *Add BASIC files...* button to display a file chooser that allows you to select BASIC files to be embedded to binary files. Chosen files are added to a list. You can select multiple files to be embedded. Click the *Remove selected* button to remove BASIC files from the list.

Use the *Output directory* text field to specify into which directory the binary files will be placed. Use the *Browse* button to specify the directory using a file chooser.

Use the *Base address* spinner to specify address to which the BASIC files will be loaded (tokenized BASIC code is relocatable).

Use the *Protect against listing* check box to protect the BASIC program against listing by disabling the BREAK key and setting the COLDST flag. Note that such protection is only rudimentary and can be broken easily.

To embed the selected BASIC files in binary files, click the *Embed* button. All BASIC files in the list will be embedded in binary files. A report is displayed after embedding processing finishes.

6.4 Tape Image Extractor

The tape image extractor is a tool designed to extract data from tape images. Tape image extractor allows you to do the following:

1. Display basic information about tape image chunks
2. Select tape image chunks for data extraction
3. Determine which portions of tape image chunks will be extracted
4. Extract data from tape image chunks to plain data files
5. Extract boot files to binary files
6. Extract data from tape image chunks to binary files
7. Save selected tape image chunks to a new tape image file

6.4.1 Operations

To open the Tape Image Extractor window, select the *Tape image extractor* item from the *Tools* menu.

To open a tape image, select the *Open tape image* item from the *File* menu.

To extract data from tape image chunks, select one or more tape image chunks. Then select the *Extract data* item from the *Chunks* menu. Select output file using the displayed file chooser. A report is displayed after the extraction.

To extract data from tape image chunks to a binary file, select one or more tape image chunks. Then select the *Extract data to binary file* item from the *Chunks* menu. A dialog that will allow you to select output file and parameters of the extraction will be displayed. Enter values and click the *Extract* button to perform the extraction.

To determine which portion of tape image chunk or chunks will be extracted, select one or more tape image chunks. Then select the *Set data extraction hint* from the *Chunk* menu. Enter values and click the *OK* button.

To save selected tape image chunks to a new tape image, select the *Save selected chunks* or *Save all chunks* item from the *File* menu. Select output file using the displayed file chooser. Note that FUJI chunk is inserted to the beginning of the tape image if needed.

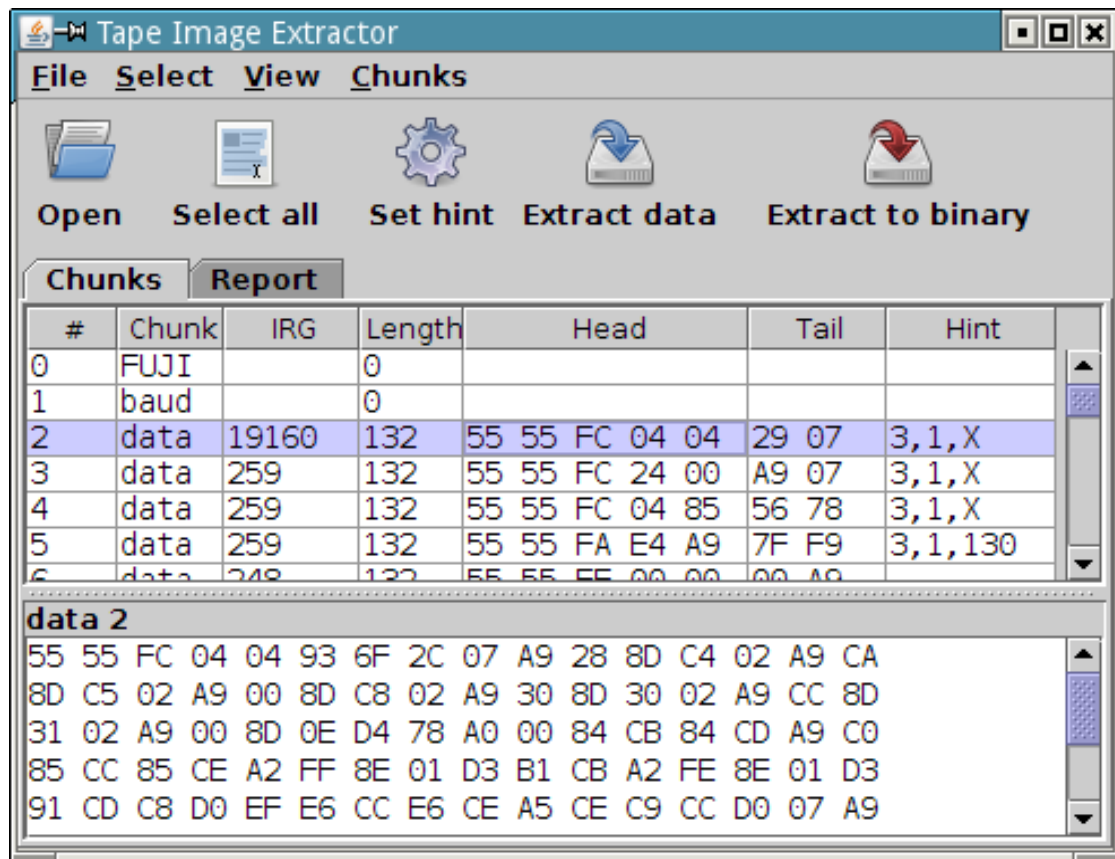


Figure 10: Tape Image Extractor

7 Hardware that Can Be Used with Turgen System

7.1 Data Recorders and Compact Cassettes

For best experience with Turgen System, use a data recorder with a turbo upgrade and quality compact cassettes.

You have to use standard compact cassettes with data recorders. Such compact cassettes have one of the following markings: **IEC I, TYPE I, NORMAL BIAS, or NORMAL POSITION**.

Do not use compact cassettes marked as CHROME, METAL, or HIGH POSITION. The data recorders were not designed to be used with them.

7.2 Cassette Adapters

If you do not wish or cannot use compact cassettes, you can try an affordable and available cassette adapter. This device looks like a compact cassette, but there is no tape inside. Instead of using the tape, the cassette adapter is connected to an external source of signal using a thin cable with a JACK connector. The cassette adapter is very versatile, as it can be connected to various devices like CD players, MP3 players or similar devices. Also do not forget that the cassette adapter will work with data recorders that can no more spin the reels, but their electrical circuitry is still intact.

The Cassette adapter is most useful when connected to a computer where Turgen System is running.

To use the cassette adapter, place it into your data recorder (ensure that its top side is oriented correctly) and connect it to an external signal source. Also make yourself familiar with the concept of silence lists (see section 3.8) for reasons stated in section 7.5.

7.3 MEGA-CD Interface (CD-LINK)

This interface allows you to plug an external signal source as it would be a data recorder with Czechoslovak Super Turbo upgrade. In essence, it is an external version of Super Turbo circuitry with a pair of RCA

connectors and a SIO connector.

You can use the MEGA-CD interface to transfer Turbo 2000, Super Turbo, Turbo 2000 - kilobyte blocks, and B-TAPE records to Atari. Atari Super Turbo and Turbo ROM should work as well.

The MEGA-CD interface was not originally designed to transfer standard tape records, but with Turgen System, this is also possible when a high-quality signal source is used (computer, CD player, or MP3 player). To transfer standard tape records, you must set *Do not modulate standard records* configuration entries to *true*.

7.4 SIO2PC and ATART

With appropriate software, both devices allow transfer of standard tape records. Also Czechoslovak Turbo 2000 records can be transferred using these devices. Refer to section 9.

7.5 Loading Binary Files with Replacement Devices

The greatest common disadvantage of devices other than data recorders and compact cassettes (let us call them all **replacement devices**) is that they cannot be controlled by the Atari computer.

When a binary loader is loading a binary file, it stops the data recorder after each block or segment loaded. Then the data is processed, the data recorder is activated and loading continues.

The replacement devices cannot be stopped by the Atari computer. This is usually harmless when DATA segments of binary files are loaded, because processing of the DATA segments is fast. On the other hand, processing of the INIT segments can take considerable amounts of time as virtually any code can be executed (decompression routines, waiting for a key to be pressed). Without appropriate countermeasures, blocks of data can be accidentally skipped.

To remedy the problem stated, Turgen System supports silence lists. The silence lists allow to generate silence or pause the signal generator after blocks that contain the INIT segments.

If you are using a replacement device, it is strongly recommended that you make yourself familiar with the silence lists and use them.

For more information about the silence lists, refer to section 3.8.

8 Postprocessing

Turgen System allows to process its outputs by external programs. This is called *postprocessing*. After the output is created, an external program according to a given *command line* is executed.

To reference the Turgen System's output in the command line, some special symbols are introduced. The symbols are described in table 3.

If the command line starts with the exclamation mark (!), output file is deleted after the external program terminates, if possible.

Processing of the command line is very limited. The command line is interpreted as a sequence of strings separated by spaces. The first string is name (possibly including path) of the external program, the remaining strings are parameters passed to the external program. Parameters containing spaces have to be enclosed in double quotes.

Command lines (after special symbol substitution) are always stored into the `turgen.log` file, so the correctness of command lines can be verified.

Symbol	Meaning
%OD%	Output directory
%ODS%	Output directory followed by file separator
%OFN%	Output file name without last extension
%OFNE%	Output file name with last extension

Table 3: Special symbols

8.1 Postprocessing of WAVE Files

To enable postprocessing of the WAVE files, select the *Wave postprocessing* check box menu item from the *Generator* menu. Specify the command line in the Wave generator/Postprocessing command configuration entry.

8.2 Postprocessing of Tape Images

To enable postprocessing of the tape images, select the *Tape image postprocessing* check box menu item from the *Generator* menu. Specify the command line in the Tape image generator/Postprocessing command configuration entry.

8.3 Examples

Example of the special symbols for output file: /mnt/win_d/emulator/atari/wav/river_raid.wav

%OD% = /mnt/win_d/emulator/atari/wav

%ODS% = /mnt/win_d/emulator/atari/wav/

%OFNE% = river_raid.wav

%OFN% = river_raid

Example of conversion to MP3:

lame %ODS%%OFNE% %ODS%%OFN%.mp3

Example of conversion to OGG Vorbis with deletion of the original file:

!oggenc -o %ODS%%OFN%.ogg %ODS%%OFNE%

Conversion to MP3 using LAME in the terminal emulator and consequent playback by the xmms media player. The original file is deleted:

!konsole -e bash -c "lame %ODS%%OFNE% %ODS%%OFN%.mp3 && xmms %ODS%%OFN%.mp3"

9 Data Transfer via Serial Port in Collaboration with CAS COM Utility

9.1 Introduction

CAS COM is a small utility for loading tape images to Atari via serial port. It supports standard and Turbo 2000 cassette images (namely tr2k tape image chunks). CAS COM works with SIO2PC, ATART or compatible hardware interfaces.

CAS COM can be used as postprocessor of tape images created by TURGEN SYSTEM. Since CAS COM is currently available only for Microsoft Windows operating systems, the following text presumes that such operating system is used.

CAS COM has a web page: http://sdq.czweb.org/old_computers/atari/projects/cascom/index.html.

To use CAS COM, set the *Tape image generator/Tape image chunks* configuration entry to *trXX*.

9.2 Command Line Considerations

Let us presume that CAS COM resides in C:\UTILS\ATARI directory. The configuration entry Tape image generator/Postprocessing command should have the following value:

cmd /x C:\UTILS\CASCOM\CASCOM.EXE %ODS%%OFNE%

It is important to add command line interpreter to the command line, because CAS COM uses console I/O to display important information. Users of Microsoft Windows 95/98/98SE/ME should use *command* instead of *cmd*.

CAS COM accepts other useful command line parameters. /S starts tape image loading immediately, /e terminates program after data transfer. Moreover /1, /2, /3, /4 or /c<num> parameters allow to choose serial port.

10 Hints and Tips

- If the SHIFT key is pressed when the *Add item to playlist* main control button is pressed, the contents of the playlist item manipulation dialog will not be cleared. This can be used to duplicate playlist items.
- A good way to reduce loading times is to reduce duration of the pilot tones.
- Do not forget that you can size most of the program windows as you want. The bounds of the windows are persistent, so if you exit the Turgen System and restart it, you will find the windows exactly where you left them.
- If you, for some reason, store the generated electric signal on compact discs (CDs) and you use compact disc player, try to switch off various shock protections and avoid nonstandard rotational speeds. Such features sometimes cause sample losses.

Part II

BUILT-IN PLUGINS

11 Turbo 2000 and Super Turbo

11.1 Characteristics

The plugins convert input files to Czechoslovak turbo systems **Turbo 2000** and **Super Turbo**. Both plugins also provide means to circumvent main limitation of both systems - the incapability to accommodate segmented binary files. The user interface is depicted on figure 11.

TS Playlist item

PLUGIN: Turbo 2000

Input file: sections/aonline/R/River Raid/River Raid (v2).xex **Browse**

Output file: sections/aonline/R/River Raid/River Raid (v2).wav **Browse**

Conversion type
Monolithic binary file to Turbo 2000 **Check loader**

Header block
File name: River Raid
Type: 3
Load: 16384 Length: 8369 Run: 24704
Auto set header **Load header**

Binary file
Silence list: **S** **P** 1
☐ Do not prepend binary loader

Pulses: T2270

OK **Cancel** **Clear**

Figure 11: Turbo 2000, Super Turbo

11.2 Conversion types

Turbo 2000 and Super Turbo plugins support 6 conversion types. Select the conversion type using the *Conversion type* combo box.

Monolithic binary file to Turbo 2000 or Super Turbo. Conversion of a monolithic binary file (see 1.9). The input file must be a monolithic binary file. This is a natural usage of Turbo 2000 or Super Turbo systems.

ChainLoading. Conversion of a segmented binary file to a *chain of Turbo 2000 or Super Turbo block pairs*. A special binary loader (Chainloader 2) that loads the block pairs is prepended before the chain. Use the *Check loader* button to determine whether the special binary loader will be destroyed by the binary file.

BlockLoading. Conversion of a segmented binary file to a *chain of Turbo 2000 or Super Turbo blocks*. A special binary loader (Blockloader) that loads the blocks (and accommodates information where to place the blocks in the memory) is prepended before the chain. The binary file can have up to 62 segments. Use the *Check loader* button to determine whether the special binary loader will be destroyed by the binary file.

Tokenized BASIC to Turbo 2000 or Super Turbo. Conversion of a tokenized BASIC program. Note that many loaders cannot load such program directly. To circumvent such limitation, you can embed tokenized BASIC to binary file. See section 6.3.

Plain DATA to Turbo 2000 or Super Turbo. Conversion of plain data. You must enter values in the text fields related to the header block.

Binary file to binary turbo. Conversion of a binary file to the Binary turbo ¹ (file type 4) format. Binary files can be stored in this format, but under normal circumstances, you cannot run them directly.

There are two known programs that provide special functionality for these files:

1. VisiCopy III (a commercial product by JRC) allows you to run such binary files, but only if they do not contain INIT segments.
2. ChainCopy 1.1 (auxiliary utility for Turgen System) can read these files and convert them as the ChainLoading conversion would do.

11.3 Header Block

Use the text fields *File name*, *Type*, *Load*, *Length* and *Run* to specify entries of the Turbo 2000 or Super Turbo header block.

Click the *Auto set header* button to automatically enter values in the text fields mentioned above. The information is obtained by an analysis of the input file and the selected conversion type. Furthermore, if the input file is not a monolithic binary file and according to the selected conversion type it should be, a warning dialog with recommendations is displayed.

Click the *Load header* to load the turbo header from an external file. The header is loaded automatically if it is stored in a file that is named same as the input file followed by a *.thead*er suffix. In other cases, a file chooser is displayed.

11.4 Inserting Silence After INIT Segments

The text field *Silence list* contains a silence list (refer to section 3.8). This is applicable only for ChainLoading and BlockLoading conversion types.

11.5 Prepending Universal Turbo Loader

If you do not have a cartridge with Turbo 2000 or Universal Turbo loader, you can prepend a cassette version of such loader. Set the *Prepend Universal Turbo loader* configuration entry to *true*.

11.6 Using Custom Binary Loaders

Select the *Do not prepend binary loader* check box if you intend to use your own custom version of Chainloader 2 or Blockloader. The file will be converted, but the loader will not be prepended, so you will be able to use your own.

11.7 Configuration Entries

Turbo 2000/Invert polarity of pulses

Invert polarity of pulses

Turbo 2000/Header block pilot tone length

Number of pilot tone pulses of the header block (256-8192)

Turbo 2000/Data block pilot tone length

Number of pilot tone pulses of the data block (256-8192)

¹Also known as "Rožnovské turbo"

Turbo 2000/Silence after header

Duration of silence that is generated after the header block (0-30). Note that many Universal Turbo loaders do not tolerate any silence after header.

Turbo 2000/Pause after header

If set to true, output of electric signal to sound card will be paused after the header block. This can be useful for Turbo 2000 only loaders that wait for a key press. Note that many Universal Turbo loaders do not tolerate any interruptions or silence after the header block.

Turbo 2000/Pilot tone length for BlockLoading

Number of pilot tone pulses of data blocks for BlockLoading conversion type (256-8192)

Turbo 2000/Prepend Universal Turbo loader

Prepend Universal Turbo loader as a standard cassette boot file

Super Turbo/Invert polarity of pulses

Invert polarity of pulses

Super Turbo/Header block pilot tone length

Number of pilot tone pulses of the header block (256-8192)

Super Turbo/Data block pilot tone length

Number of pilot tone pulses of the data block (256-8192)

Super Turbo/Pilot tone length for BlockLoading

Number of pilot tone pulses of data blocks for BlockLoading conversion type (256-8192)

Super Turbo/Prolongate pilot tone

Increase number of pilot tone pulses with increasing approximate baud rate

Super Turbo/Silence after header

Duration of silence that is generated after the header block (0-30). Note that many Universal Turbo loaders do not tolerate any silence after header.

Super Turbo/Prolongate pilot tone for BlockLoading

Increase number of pilot tone pulses with increasing approximate baud rate for BlockLoading conversion type

Super Turbo/Convert binary loaders to Turbo 2000

If set to true, the Chainloader and Blockloader binary loaders are converted to Turbo 2000 instead of Super Turbo.

Super Turbo/Prepend Universal Turbo loader

Prepend Universal Turbo loader as a standard cassette boot file

12 Turbo 2000 - Kilobyte Blocks

12.1 Characteristics

The plugin converts files to the **Turbo 2000 - kilobyte blocks** Czechoslovak turbo system. There are no special restrictions on input files.

12.2 User Interface

The user interface is depicted on figure 12.

The text field *File name* corresponds to the same field of the Turbo 2000 - kilobyte blocks header block. The purpose of the text field *Silence list* is described in section 3.8.

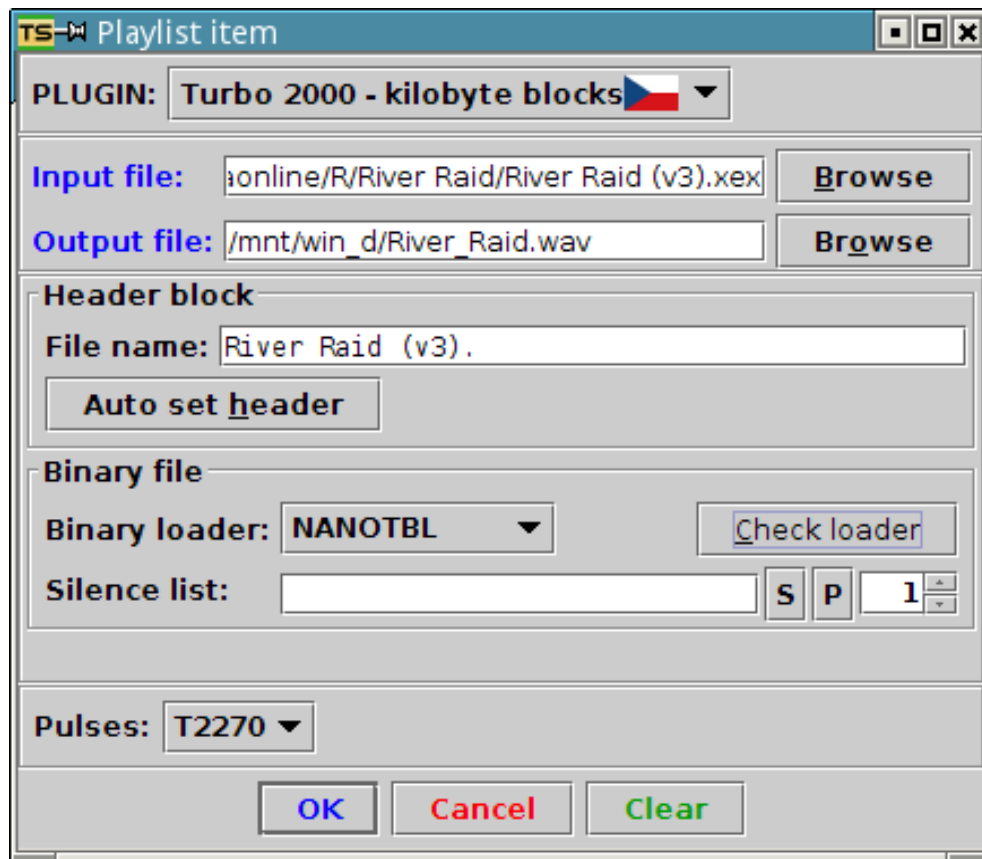


Figure 12: Turbo 2000 - kilobyte blocks

12.3 Binary Loaders

Turbo 2000 - kilobyte blocks turbo system can accommodate binary files. You can prepend one of the special miniature built-in binary loaders. For this turbo system, you can choose MiniTBL, NanoTBL, NanoTBL[UR] or NanoTBL[U2] loader by using the *Binary loader* combo box. The loader is converted to the Turbo 2000 system.

The MiniTBL loader is a combination of stripped "T:" device handler that allows only READ operation and code for binary load using CIO.

The NanoTBL loaders are single-purpose binary loaders reading data blocks, not using CIO at all. NanoTBL stores data blocks to the freely available RAM. NanoTBL[UR] stores the data blocks to the beginning of the "RAM under ROM", NanoTBL[U2] to the end of "RAM under ROM".

Use the *Check loader* button to verify whether the binary file will destroy the selected binary loader.

12.4 Prepending Universal Turbo Loader

If you don't have a cartridge with Turbo 2000 or Universal Turbo loader, you can prepend a cassette version of such loader. Set the *Prepend Universal Turbo loader* configuration entry to *true*.

12.5 Configuration Entries

Turbo 2000 - kilobyte blocks/Invert polarity of pulses

Invert polarity of pulses

Turbo 2000 - kilobyte blocks/Header block pilot tone length

Number of pilot tone pulses of the header block (256-8192)

Turbo 2000 - kilobyte blocks/Data block pilot tone length

Number of pilot tone pulses of the data blocks (256-8192)

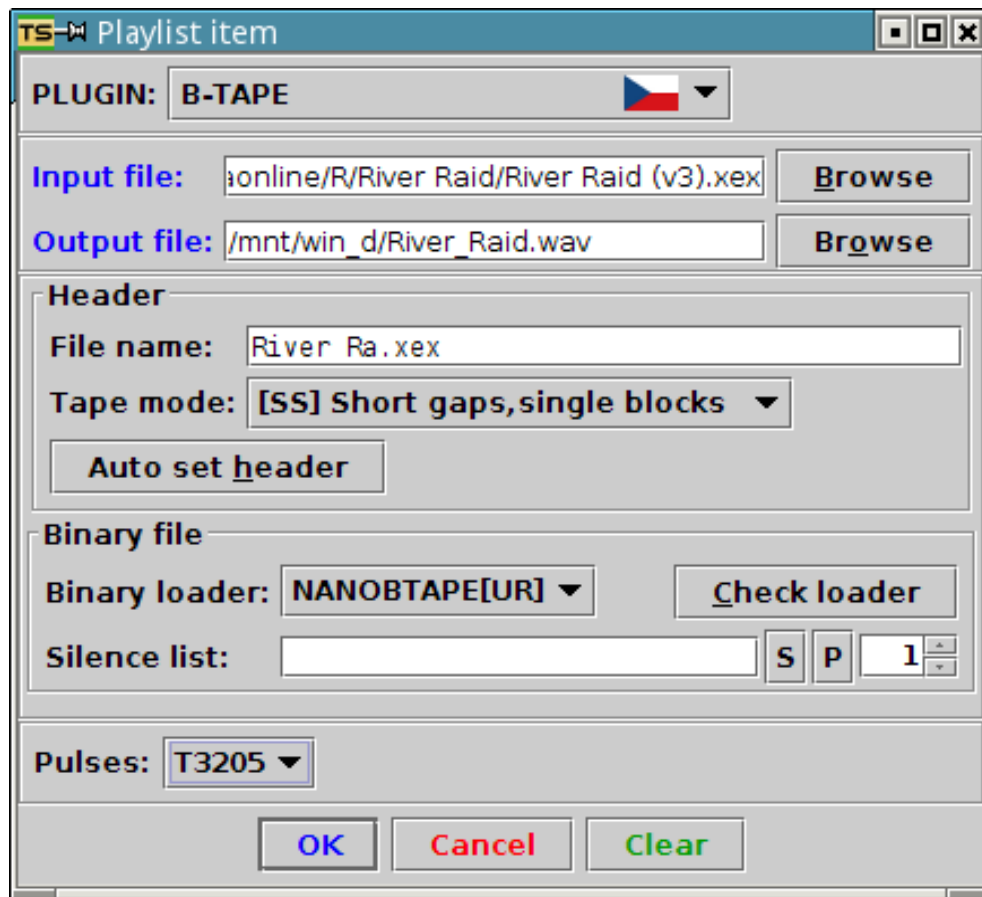


Figure 13: B-TAPE

Turbo 2000 - kilobyte blocks/Silence after header
 Number of seconds of the silence inserted after the header block (0-30)
 Turbo 2000 - kilobyte blocks/Silence after loader
 Number of seconds of the silence inserted after the binary loader (0-30)
 Turbo 2000 - kilobyte blocks/Name loader same as file
 The binary loader will have name same as the converted file
 Turbo - kilobyte blocks/Prepend Universal Turbo loader
 Prepend Universal Turbo loader as a standard cassette boot file

13 B-TAPE

13.1 Characteristics

The plugin converts files to the **B-TAPE** Czechoslovak turbo system. There are no special restrictions on input files. The B-TAPE system is backward compatible with the Turbo Tape system used by the TT-DOS operating system.

13.2 User Interface

The user interface is depicted on figure 13.

The text field *File name* corresponds to the same field of the B-TAPE data block. The purpose of the text field *Silence list* is described in section 3.8. Use the *Tape mode* combo box to select tape mode.

13.3 Binary Loaders

B-TAPE turbo system can accommodate binary files. You can prepend one of the special miniature built-in binary loaders. For this turbo system, you can choose NanoBTAPE, NanoBTAPE[UR] or NanoBTAPE[U2] loader using the *Binary loader* combo box. The loader is converted to the Turbo 2000 system.

The NanoBTAPE loaders are single-purpose binary loaders reading blocks not using CIO. NanoBTAPE stores the blocks to the freely available RAM. NanoBTAPE[UR] stores blocks to the beginning of the “RAM under ROM”, NanoBTAPE[U2] to the end of “RAM under ROM”.

Use the *Check loader* button to verify whether the binary file will destroy the selected binary loader.

13.4 Prepending Universal Turbo Loader

If you don't have a cartridge with Turbo 2000 or Universal Turbo loader, you can prepend a cassette version of such loader. Set the *Prepend Universal Turbo loader* configuration entry to *true*.

13.5 Configuration Entries

B-TAPE/Invert polarity of pulses

Invert polarity of pulses

B-TAPE/Pilot tone length

Number of pilot tone pulses of the blocks (256-8192)

B-TAPE/Prolongate pilot tone

Increase number of pilot tone pulses with increasing approximate baud rate

B-TAPE/Silence after first block

Number of seconds of the silence inserted after the first B-TAPE block (0-30)

B-TAPE/Silence after loader

Number of seconds of the silence inserted after the binary loader (0-30)

B-TAPE/Name loader same as file

The binary loader will have name same as the converted file

B-TAPE/Force tr2k tape image chunks

The generated trXX type tape image chunks will be tr2k instead of trbt. This allows the CAS COM utility to transfer files in the B-TAPE format.

B-TAPE/Prepend Universal Turbo loader

Prepend Universal Turbo loader as a standard cassette boot file

14 KSO Turbo 2000

14.1 Characteristics

The plugin converts files to the **KSO Turbo 2000** Polish turbo system. There are no special restrictions on input files. The KSO Turbo 2000 system is compatible with various similar turbo systems (e.g. Turbo 2000F).

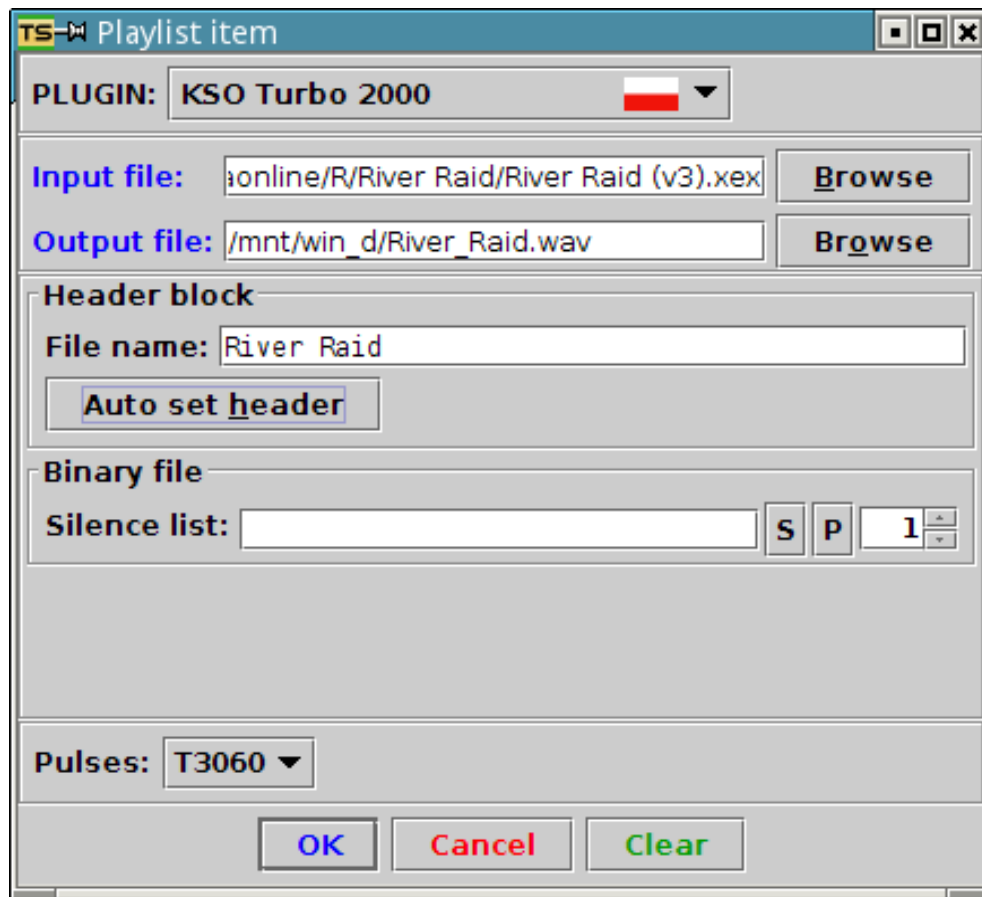


Figure 14: KSO Turbo 2000

14.2 User Interface

The user interface is depicted on figure 14.

The text field *File name* corresponds to the same field of the header block. The purpose of the text field *Silence list* is described in section 3.8.

14.3 Configuration Entries

KSO Turbo 2000/Invert polarity of pulses

Invert polarity of pulses

KSO Turbo 2000/Header block pilot tone length

Number of pilot tone pulses of the header block (256-8192)

KSO Turbo 2000/Data block pilot tone length

Number of pilot tone pulses of the data blocks (256-8192)

KSO Turbo 2000/Silence after header

Number of seconds of the silence inserted after the header block (0-30)

KSO Turbo 2000/Pause after header

If set to true, output of electric signal to sound card will be paused after the header block

KSO Turbo 2000/Pulse Corrections

Corrections of pulses

15 Turbo Blizzard

15.1 Characteristics

Plugin converts files to **Turbo Blizzard** Polish turbo system. There are no special restrictions on input files.

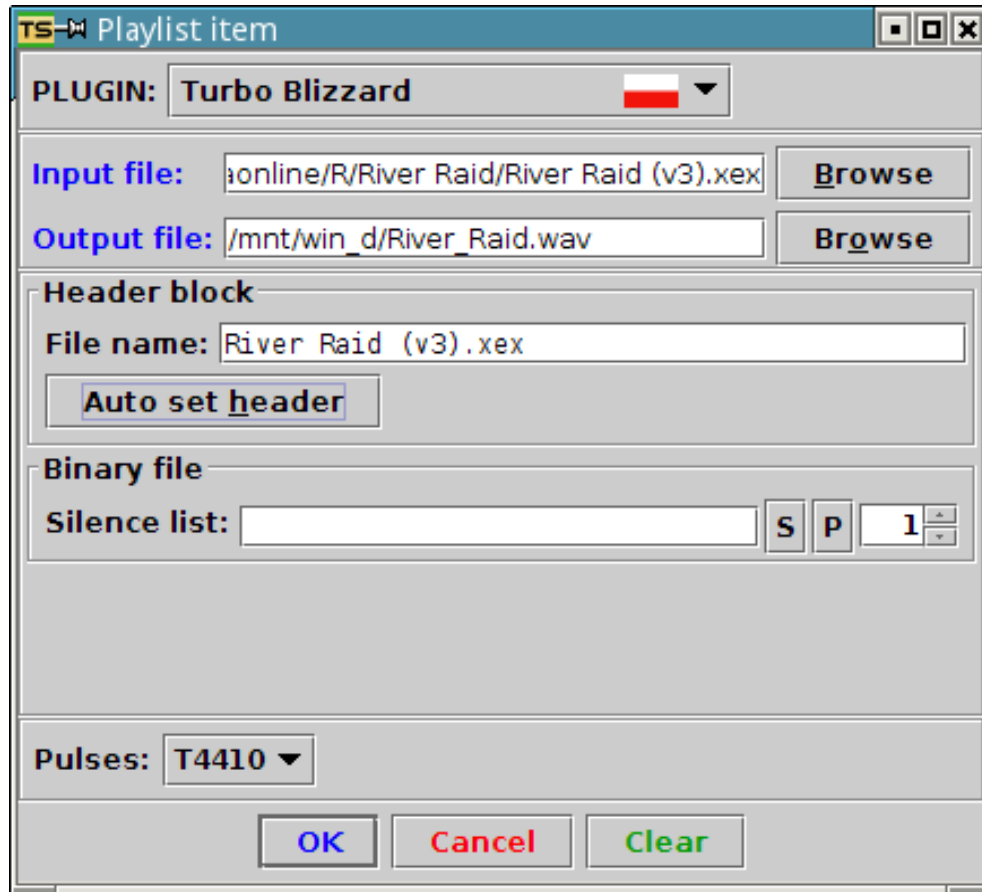


Figure 15: Turbo Blizzard

15.2 User Interface

The user interface is depicted on figure 15.

The text field *File name* corresponds to the same field of the header block. The purpose of the text field *Silence list* is described in section 3.8.

15.3 Configuration Entries

Turbo Blizzard/Invert polarity of pulses

Invert polarity of pulses

Turbo Blizzard/Long gaps between blocks

Make long gaps between blocks

Turbo Blizzard/Silence after header

Number of seconds of the silence inserted after the header block (0-30)

Turbo Blizzard/Pause after header

If set to true, output of electric signal to sound card will be paused after the header block

Turbo Blizzard/Pulse Corrections

Corrections of pulses

16 Turbo ROM

16.1 Characteristics

The plugin converts files to the **Turbo ROM** Polish turbo system. The following input files are supported:

- Turbo ROM compatible binary files
- Binary files
- Tokenized BASIC files

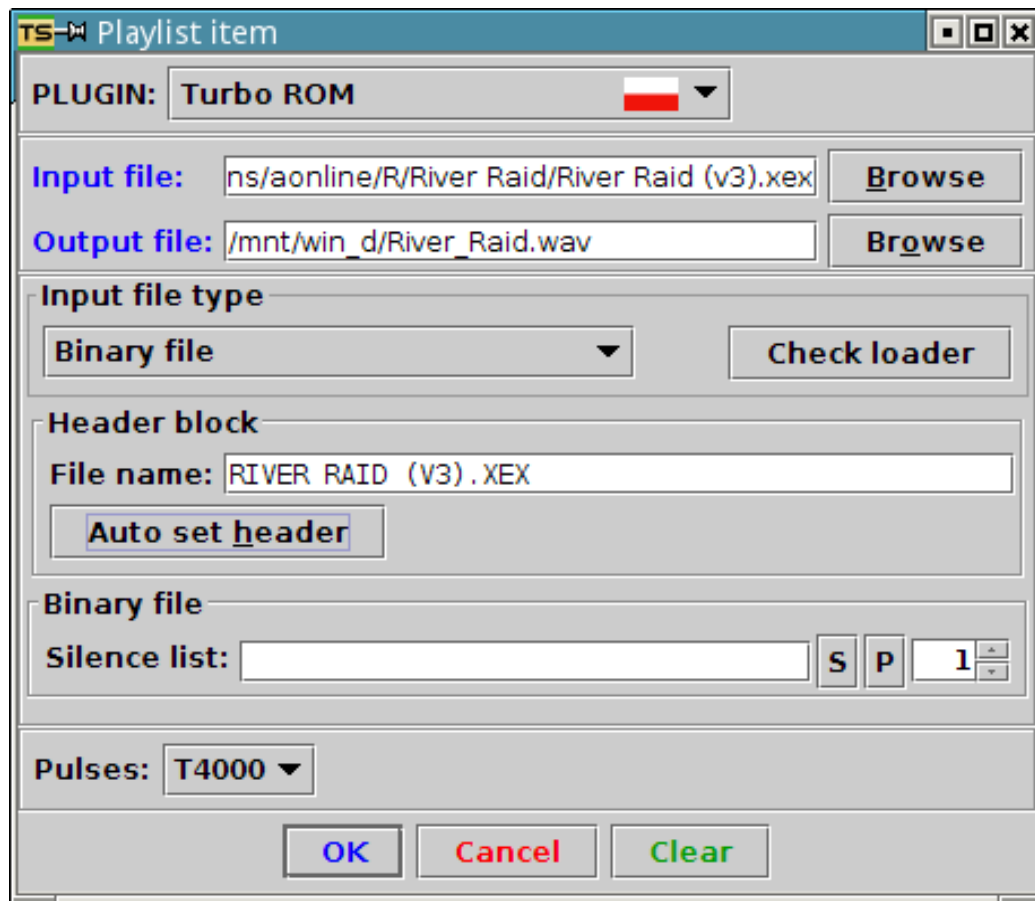


Figure 16: Turbo ROM

16.2 User Interface

The user interface is depicted on figure 16.

The text field *File name* corresponds to the same field of the header block. Use the *Auto set header* button to automatically set file name and also to verify whether the input file is Turbo ROM compatible binary file.

Use the *Input file type* combo box to select input file type.

16.3 Conversion of Turbo ROM Compatible Binary Files

These binary files consist of exactly one DATA segment and at most one RUN segment and at most one INIT segment. Files are converted to the Turbo ROM natural format.

16.4 Conversion of Binary Files

16.4.1 Processing

Binary Files are converted to a special format. A special binary loader in the Turbo ROM natural format is prepended. The binary files are normalized before conversion (RUNINIT segments are split, RUN segment is moved to the end of the file).

16.4.2 User Interface

Use the *Check loader* button to verify whether the binary file will destroy the binary loader. The purpose of the text field *Silence list* is described in section 3.8.

16.5 Conversion of Tokenized BASIC Files

Files are converted to the Turbo ROM natural format for tokenized BASIC files.

16.6 Prepending Loaders

If you do not have a cartridge with Turbo ROM loader, you can prepend a cassette version of such loader. Set the *Prepend Turbo ROM loader* configuration entry to deserved value. Set the *Convert binary loader to a standard cassette boot file* configuration entry to *true*.

16.7 Configuration Entries

Turbo ROM/Invert polarity of pulses

Invert polarity of pulses

Turbo ROM/Header pilot tone length

Number of pilot tone pulses of the header block (1024-8192)

Turbo ROM/Data block pilot tone length

Number of pilot tone pulses of the data block (128-2048)

Turbo ROM/Binary load pilot tone length

Number of pilot tone pulses of blocks when binary files are converted

Turbo ROM/Silence after header

Number of seconds of the silence inserted after the header block

Turbo ROM/Pause after header

If set to true, output of electric signal to sound card will be paused after the header block

Turbo ROM/Silence after binary loader

Number of seconds of the silence inserted after binary loader

Turbo ROM/Convert binary loader to a standard cassette boot file

If set to true, the binary loader is converted to a standard cassette boot file instead of a Turbo ROM compatible binary file.

Turbo ROM/Prepend Turbo ROM loader

Determines if a Turbo ROM natural format loader will be prepended as a standard cassette boot file. The values are the following: "None" - no loader will be prepended, "Standard" - a plain loader will be prepended, "Diagnostic" - a verbose loader that displays hexadecimal dump of the header block will be prepended.

Turbo ROM/LOAD address of a BASIC program

Base address to which BASIC programs will be loaded

Turbo ROM/RUN address of a BASIC program

Address of a routine that executes BASIC programs (default is 41086)

Turbo ROM/Generate loader only

When set to true, only a loader is converted by the plugin.

Turbo ROM/Pulse Corrections

Corrections of pulses

17 Atari Super Turbo

17.1 Characteristics

The plugin converts files to the **Atari Super Turbo** Polish turbo system. Conversion of binary files to the following formats is supported:

- AST format that can accommodate binary files that have up to 44 segments and no INIT segments.
- BUT format that can accommodate binary files that have up to 254 segments of any type. A generic BUT loader is used to load such files. The loader occupies addresses 1926 - 2185.

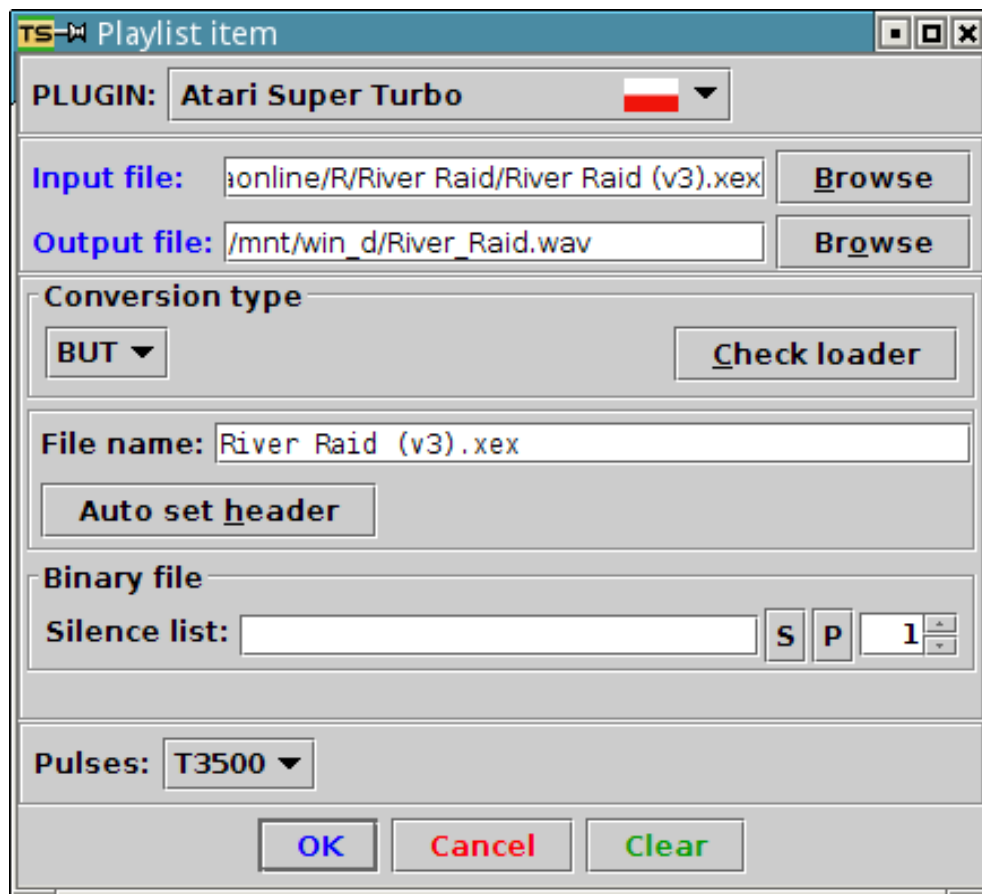


Figure 17: Atari Super Turbo

17.2 User Interface

The user interface is depicted on figure 17.

The text field *File name* corresponds to the same field of the header block. The *Auto set header* button can be used to automatically set file name and also to verify whether the input file is compatible with the selected format (AST or BUT). The purpose of the text field *Silence list* is described in section 3.8.

17.3 Configuration Entries

Atari Super Turbo/Invert polarity of pulses

Invert polarity of pulses

Atari Super Turbo/AST header pilot tone length

Number of pilot tone pulses of the AST header block (256-16384)

Atari Super Turbo/Data block pilot tone length

Number of pilot tone pulses of data blocks (256-16384)

Atari Super Turbo/Silence after AST header

Number of seconds of the silence inserted after the header block (0-30)

Atari Super Turbo/Pause after header

If set to true, output of electric signal to sound card will be paused after the header block

Atari Super Turbo/BUT loader will wait for any key

Determines whether the BUT loader will require a key press to proceed

Atari Super Turbo/Silence after BUT loader

Duration of silence generated after BUT loader

Atari Super Turbo/Pulse Corrections

Corrections of pulses

18 Hard Turbo

18.1 Characteristics

The plugin converts files to the **Hard Turbo** Polish turbo system. According to the nature of this turbo system, the input files must be binary files.

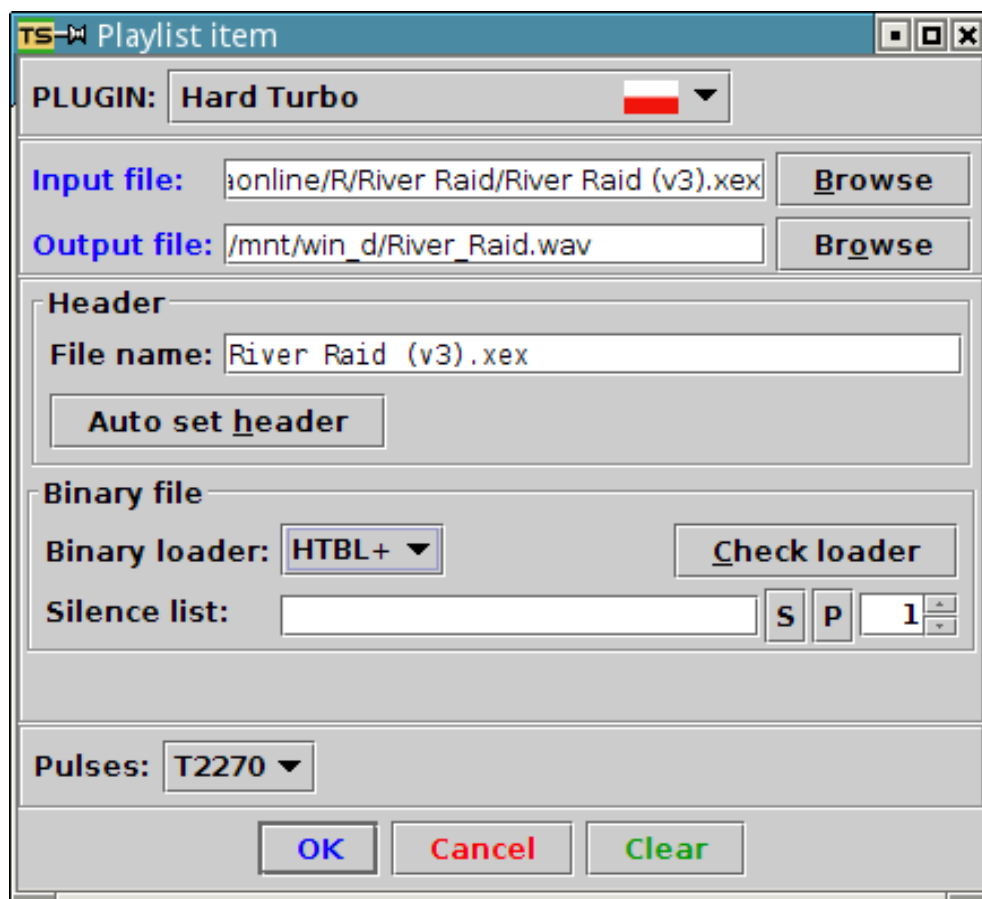


Figure 18: Hard Turbo

18.2 User Interface

The user interface is depicted on figure 18.

The text field *File name* corresponds to the same field of the main header block. Use the *Auto set header* to automatically set file name. The purpose of the text field *Silence list* is described in section 3.8.

18.3 HTBL+ Loader

You can add HTBL+ loader before the binary file converted.

HTBL+ is an extended binary loader that has the following enhancements

- Data recorder motor is switched off after segment data is loaded. This enables loading of binary files that execute lot of code from INIT segments
- RUNAD is set in a way that allows RUN segment to be the first segment of the binary file
- The loader never waits for any key under normal circumstances. This makes the loader easier to use with devices that do not support MOTOR CTRL signal
- The loader forces warm start during its initialization. This allows to load and run programs that rely on the display configuration set up by the warm start routines
- BASIC is automatically disabled

To add the HTBL+ loader, select HTBL+ from the *Binary loader* check box. Use the *Check loader* button to verify whether the binary file will destroy the HTBL+ loader.

18.4 Configuration Entries

Hard Turbo/Invert polarity of pulses

Invert polarity of pulses

Hard Turbo/Header block pilot tone length

Number of pilot tone pulses of the header block (256-16384)

Hard Turbo/Data block pilot tone length

Number of pilot tone pulses of data blocks (256-16384)

Hard Turbo/Silence after header

Number of seconds of the silence inserted after the header block (0-30)

Hard Turbo/Pause after header

If set to true, output of electric signal to sound card will be paused after the header block

Hard Turbo/Name loader same as file

The binary loader will have name same as the converted file

Hard Turbo/Convert HTBL+ loader to a standard cassette boot file

If set to true, the HTBL+ binary loader will be converted to a standard cassette boot file. This helps when you do not have a cartridge with a loader.

19 Lower Silesia Turbo 2000

19.1 Characteristics

The plugin converts binary files to the **Lower Silesia Turbo 2000** turbo system from Poland.

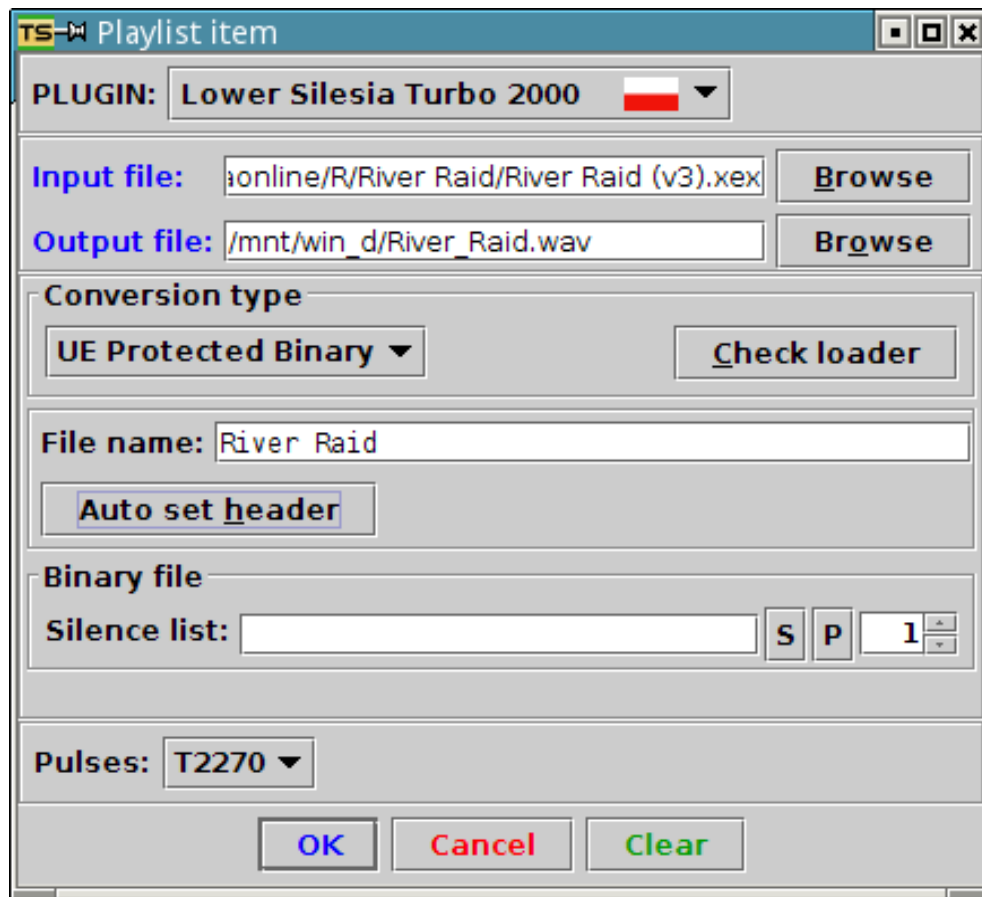


Figure 19: Lower Silesia Turbo 2000

19.2 Conversion Types

Two conversion types are supported.

Auto Turbo. Conversion of an input binary file to the Auto Turbo format (see section 25.6.2). The Auto Turbo format can accommodate any binary file, but only binary files that have no INIT segments can be loaded and executed.

UE Protected Binary. Conversion of an input binary file to the Protected Binary Format (see section 25.6.3) use by the “Unknown Exterminator” copier. A binary loader is converted to the Auto Turbo format. Then the input binary file is converted to the Protected Binary Format.

19.3 User Interface

The user interface is depicted on figure 19.

The text field *File name* corresponds to the same field of the header block. Click the *Auto set header* button to automatically set the file name. Select conversion type using the *Conversion type* box. The purpose of the text field *Silence list* is described in section 3.8.

Click the *Check loader* button to check whether the selected input file is compatible with Auto Turbo or binary loader.

19.4 Configuration Entries

Lower Silesia Turbo 2000/Header block pilot tone length
 Number of pilot tone pulses of the header block (256-8192)

Lower Silesia Turbo 2000/Data block pilot tone length
Number of pilot tone pulses of the data block (256-8192)
Lower Silesia Turbo 2000/Silence after header
Number of seconds of the silence inserted after the header block (0-30)
Lower Silesia Turbo 2000/Pause after header
If set to true, output of electric signal to sound card will be paused after the header block
Lower Silesia Turbo 2000/Segment header pilot tone length
Number of pilot tone pulses of the segment header block (128-768)
Lower Silesia Turbo 2000/Silence after loader
Duration of silence generated after binary loader

20 Standard

20.1 Characteristics

The plugin converts input files to the standard (FSK) tape records, therefore you can use it with an unmodified data recorder. The transfer speed is limited to 600-800 bd. You can convert the following types of input files:

- Monolithic binary files
- Segmented binary files
- Tokenized BASIC files and BASIC source code files
- Plain data files

20.2 User Interface

The user interface is depicted on figure 20.

Use the *Input file type* combo box to select input file type. Use the *Options* box to set additional options for the conversion. Use the *Check loader* button to verify whether the binary file will destroy a binary loader. Use the *Pulses* combo box to select transfer speed.

20.3 Conversion of Monolithic Binary Files

The monolithic binary files are converted to boot files. The following limitations apply to monolithic binary files:

- The DATA segment cannot occupy memory below address 1536
- Length of the DATA segment must not exceed 32649 bytes

If your monolithic binary file does not meet the two above-mentioned criteria, you can still convert it as a segmented binary file.

20.4 Conversion of Segmented Binary Files

20.4.1 Processing

The segmented binary files are converted as follows:

- A binary loader skeleton is customized and converted to a boot file.
- The binary file is converted to the standard tape records with short IRGs.

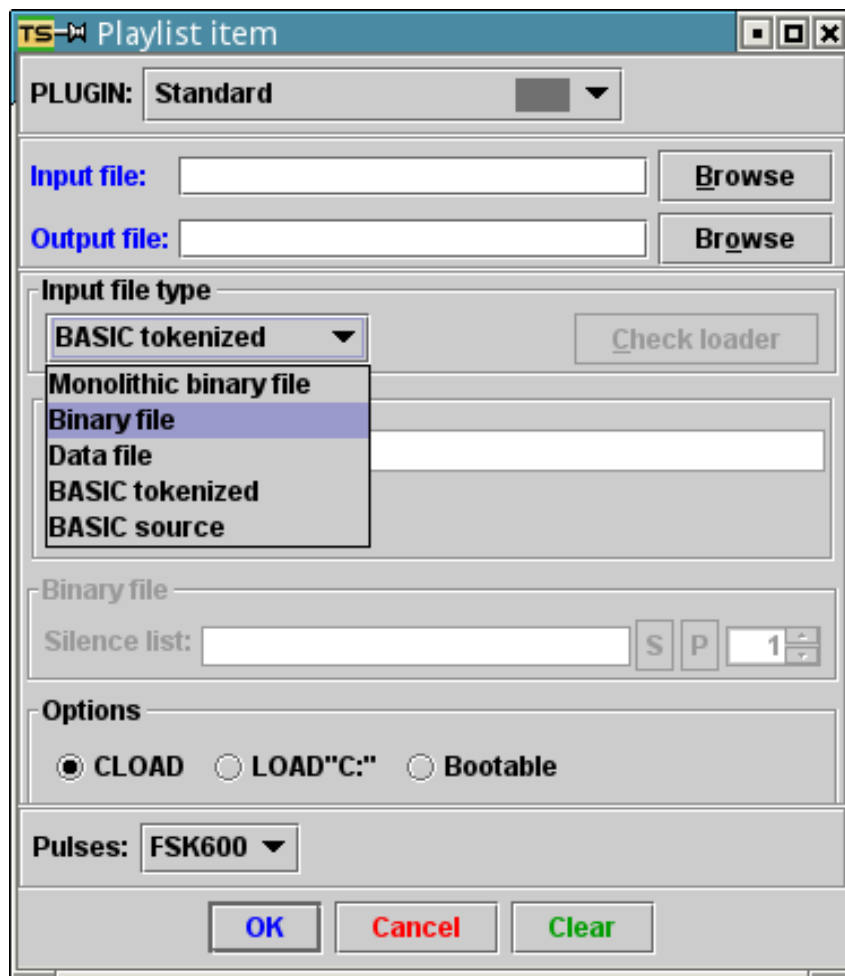


Figure 20: Standard

20.4.2 Binary Loader Skeleton

This plugin uses the STDBLOAD 2a binary loader skeleton. The STDBLOAD 2a binary loader skeleton is compatible with both pre-XL/XE and XL/XE computers and also displays program name on the screen. As a tribute to the well-known “Exclamation mark loader”, an inverse exclamation mark is displayed on the screen too. Motor is switched off when a block with an INIT segment is read.

20.4.3 User Interface

Use the *File name* text field to set name that will be displayed by the binary loader. The purpose of the text field *Silence list* is described in section 3.8. Use the *Check loader* button to verify whether the binary file will destroy the binary loader.

20.5 Conversion of Plain Data files

Plain data files are converted as they are. You can select duration of the IRGs. Use the *Options* panel to select either short IRGs or long IRGs.

20.6 Conversion of Tokenized BASIC Files

20.6.1 Formats

You can convert tokenized BASIC files to the following formats:

- Format loadable by the CLOAD command. Short IRGs are used.
- Format loadable by the LOAD"C:" or RUN"C:" commands. Long IRGs are used.
- Bootable format. First, a BASIC initializer (LAUNCHBAS) is converted to a boot file. Then the tokenized BASIC file is converted to the format loadable by the CLOAD command. The BASIC initializer forces a RUN"C:" command and also tweaks the OPEN routine to use short IRGs once. This allows you to load and run protected programs. The BASIC initializer displays the B letter on the screen during the loading process.

20.6.2 User Interface

Use the *Options* box to select the desired format.

20.7 Configuration entries

Standard/Leader duration

Duration of the leader signal in seconds (10-30).

Standard/Binary loader IRG duration

Duration of the inter-record gaps in milliseconds for standard tape records generated when a segmented binary file is converted. Default value is 250.

21 Tape Image

The plugin reads and interprets tape images. The user interface displays a list of supported tape image chunks.

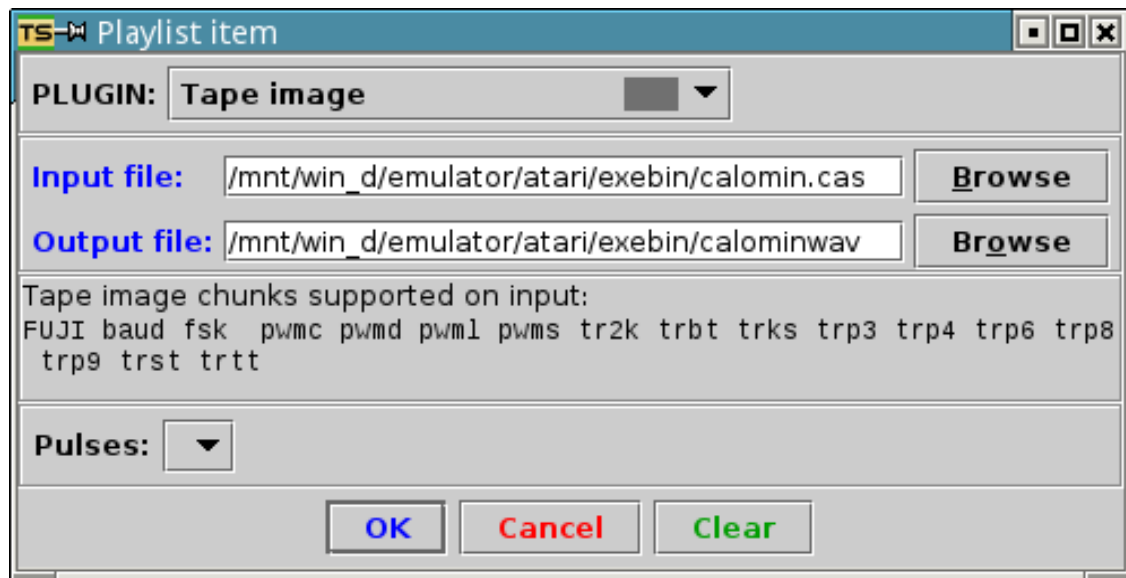


Figure 21: Tape Image

Part III

TURBO SYSTEMS

22 Introduction

This part contains information about various turbo systems that have been created in Czechoslovakia and Poland. Descriptions of the systems are sufficient to provide ability to write turbo generators, loaders, copiers and turbo decoders.

23 Information encoding

Information is encoded using pulse width modulation (PWM). In this document, width of pulse is defined as a distance between two transitions from logical zero to logical one.

24 Turbo Systems from Former Czechoslovakia

24.1 Common Information

This common information is related only to turbo systems described in this document. These turbo systems are or were widespread in former Czechoslovakia, but of course, there are or were also others.

24.1.1 Switching Data Recorder to Turbo Mode

Switching data recorder to turbo mode is done using electronic switch, that switches to turbo mode if signals COMMAND and MOTOR CTRL are active. Reading of data is done by monitoring signal at pin DATA-IN of the SIO connector. Writing of data is performed by direct change of logical value at DATA-OUT pin of the SIO connector.

24.1.2 Single Purpose or CIO

Two main kinds of Czechoslovak turbo systems can be distinguished:

1. Systems that use single purpose loaders and simple file format that can accommodate only one contiguous block of data (Turbo 2000, Super Turbo). These systems are unable to support binary load operation, although capable to accommodate binary load files themselves.
2. Systems that were created together with tape operating systems: Turbo 2000 - kilobyte blocks, Turbo Tape, B-TAPE. Aim of these systems is to partially or fully replace the disk drive.

24.1.3 Pilot Tone and Data Separation

All Czechoslovak turbo systems use same way how to separate pilot tone and data. One sync pulse (which is very narrow pulse) or narrow pulse.

24.2 Turbo 2000

24.2.1 Description

Turbo 2000 was the first turbo system available in former Czechoslovakia. It was developed in 1987 by Jiří Richter, student of Czech Technical University in Prague and member of Prague Atari user club.

Four types of pulses are distinguished: Narrow pulse, wide pulse, pilot tone pulse and sync pulse. Bits are stored in MSB to LSB order.

File stored using Turbo 2000 system consists of two blocks - header block (HEADER) and data block (DATA).

Both blocks are preceded by pilot tone (series of at least 256 pilot tone pulses) which is followed by sync pulse (which is very narrow pulse). Recommended number of pilot tone pulses is at least 2000 in order to provide compatibility with "Universal turbo" loaders.

24.2.2 Header block

Offset	Description
0	Always 0
1	File type (1 - plain data, 3 - program, 4 - binary file, 255, 254 - tokenized BASIC)
2-11	File name
12-13	Load address
14-15	Length of file
16-17	Start address
18	Check sum = (HEADER[0]) xor ... xor (HEADER[17])

24.2.3 Data block

Offset	Description
0	Always 255
1-?	Data itself
Last	Check sum = (DATA[0]) xor ... xor (DATA[?])

24.2.4 Timing

Standard transfer speed is approximately 2270 bauds. There is a big tolerance for width of all pulses.

Pulse	Center width	Tolerated range
Pilot tone	32/44100 s	(25-47)/44100 s
Wide	26/44100 s	(20-40)/44100 s
Narrow	13/44100 s	(6-19)/44100 s
Sync	10/44100 s	(4-17)/44100 s

24.2.5 Loaders

In early times, Turbo 2000 loaders were distributed on tapes, stored using standard 600 baud system. Then loaders on cartridges became widespread.

24.3 Super Turbo

24.3.1 Description

Super turbo system is an enhancement of Turbo 2000 system, developed by Jiří Richter. Supported transfer speeds are approximately from 2725 to 6411 bauds.

Two types of pulses are distinguished: Narrow pulse and wide pulse. Bits are stored in MSB to LSB order. File stored using Super Turbo consists of two blocks - header block (HEADER) and data block (DATA). Both blocks are preceded with pilot tone (series of at least 1200 wide pulses) which is followed by narrow pulse. Recommended number of pilot tone pulses is at least 2000 in order to provide compatibility with available loaders.

24.3.2 Header block

Offset	Description
0	Always 183
1	File type (1 - plain data, 3 - program, 4 - binary file, 255 - tokenized basic)
2-21	File name
22-23	Load address
24-25	Length of file
26-27	Start address
28	Check sum = (HEADER[0]) xor ... xor (HEADER[27])

24.3.3 Data block

Offset	Description
0	Always 237
1-?	Data itself
Last	Check sum = (DATA[0]) xor ... xor (DATA[?])

24.3.4 Timing

Various transfer speeds are supported. For given speed, width of wide pulse is width of narrow pulse simply doubled.

Pulse	Width
Wide	(6/44100 - 22/44100) s
Narrow	(3/44100 - 11/44100) s

24.3.5 Loaders

Special loaders for Super Turbo only are very rare. So called "Universal turbo" loaders capable to load both Turbo 2000 and Super Turbo are widespread, mostly on cartridges. Universal turbo loaders measure speed using examination of three consequent pilot tone pulses. Measured speed is also used to distinguish between Turbo 2000 and Super Turbo.

During the time, so called "Visiloader" has been invented. This loader is able to display progress of loading using PMG.

24.4 Turbo 2000 - kilobyte blocks

24.4.1 Description

Turbo system designed together with various versions of "Turbo operating system" (TOS).

Four types of pulses are distinguished: Narrow pulse, wide pulse, pilot tone pulse and sync pulse. Bits are stored in MSB to LSB order.

File stored using this turbo system consists of many blocks. First block is a header block (HEADER), remaining blocks (BLOCK) are data blocks that have 1026 bytes. Every block is preceded by pilot tone (series of at least 256 pilot tone pulses) which is followed by one sync pulse. Recommended number of pilot tone pulses is at least 2000 in order to provide compatibility with available loaders.

24.4.2 Header block

Offset	Description
0-1	Always 0
2-17	File name
18	Check sum = HEADER[0] xor HEADER[1] xor ... xor HEADER[17]

24.4.3 Data blocks

Offset	Description
0	255=Full block, 250=EOF block. Numbers 251-254 indicate partially filled block. If we subtract 251 from this number, we obtain a difference that will be denoted as Z . This difference can be 0,1,2 or 3 and represents higher byte of number of valid data bytes in the block.
1-1024	Data itself. If the block is a full block, there is 1024 bytes of data. If the block is EOF block, there are all zeros. If the block is a partially filled block, there is data padded with zeros up to the length of 1023 bytes. Last byte is lower byte of number of valid data bytes in the block. If we denote this lower byte as X , the number of valid bytes in the block is $Z * 256 + X$
1025	Check sum = BLOCK[0] xor BLOCK[1] xor ... xor BLOCK[1024]

24.4.4 Timing

Standard transfer speed is approximately 2270 bauds. There is a big tolerance for width of pulses.

Pulse	Center width	Tolerated range
Pilot tone	32/44100 s	(25-47)/44100 s
Wide	26/44100 s	(20-40)/44100 s
Narrow	13/44100 s	(6-19)/44100 s
Sync	10/44100 s	(4-17)/44100 s

24.4.5 Loaders

This turbo system is integrated into to various version of "Turbo operating system" (TOS) and also to one special version of TURBO BASIC XL widely used in former Czechoslovakia. Usual CIO device installed is T: or D:.. CIO functions supported are OPEN, READ, WRITE and CLOSE.

24.5 Turbo Tape

24.5.1 Description

Advanced turbo system introduced with TT-DOS operating system sold by JRC company. Aim of this turbo system is to fully replace disk drive. Usual CIO device installed is B: or D:.

Four types of pulses are distinguished: Narrow pulse, wide pulse, pilot tone pulse and sync pulse. Bits are stored in MSB to LSB order.

File stored using Turbo Tape consists of blocks (BLOCK) that are 1026 bytes long. Every block is preceded by pilot tone (series of at least 256 pilot tone or wide pulses) which is followed by one sync or narrow pulse. Recommended number of pilot tone or wide pulses is at least 2000 in order to provide compatibility with available loaders.

24.5.2 Tape modes

Mode	Description
SS	Short gaps between blocks. First block is written twice, others once.
SD	Short gaps between blocks. All blocks are written twice.
LS	Long gaps between blocks. First block is written twice, others once.
LD	Long gaps between blocks. All blocks are written twice.

D modes provide data redundancy for safe data storage. First block is always written twice in order to provide convenient support for READ DIRECTORY CIO function.

24.5.3 Structure of the blocks

Offset	Description
0	Sequential number of the block. Numbering starts from 1. In case of D modes, pairs of blocks have same sequential number.
1	Tape mode: SS=128, LS=0, SD=192, LD=64
2,3	Bits 0-11: Offset of last valid byte in the block (16-1024), this offset will be denoted as B . Bit 15: Last block flag. Byte at offset 2: $B \% 256$ Byte at offset 3: $[B / 256] + [128 * (EOF \text{ is true})]$
4	Undefined number. All blocks of one file should have same number here.
5	Undefined.
6-16	File name and extension padded with spaces. First 8 bytes are devoted to file name, last 3 bytes are devoted to extension.
17-1024	Data itself (1008 bytes). Data must be padded with any bytes.
1025	Check sum = BLOCK[0] xor BLOCK[1] xor ... xor BLOCK[1025]

24.5.4 Timing

Timing is compatible with Turbo 2000 and Super Turbo.

24.6 B-TAPE

24.6.1 Description

Advanced turbo system introduced with B-TAPE extension for operating system BW-DOS. Aim of this extension is to fully replace disk drive. B-TAPE allows to use both CIO and SIO to exploit data recorder turbo modification. The disadvantage is a big size of the device handler. B-TAPE was designed as improvement of Turbo Tape system.

Four types of pulses are distinguished: Narrow pulse, wide pulse, pilot tone pulse and sync pulse. Bits are stored in MSB to LSB order.

File stored using B-TAPE consists of blocks (BLOCK) that are 1026 bytes long. Every block is preceded by pilot tone (series of at least 256 pilot tone or wide pulses) which is followed by one sync or narrow pulse. Recommended number of pilot tone or wide pulses is at least 2000 in order to provide compatibility with available loaders.

24.6.2 Tape modes

Mode	Description
SS	Short gaps between blocks. First block is written twice, others once.
SD	Short gaps between blocks. All blocks are written twice.
LS	Long gaps between blocks. First block is written twice, others once.
LD	Long gaps between blocks. All blocks are written twice.

D modes provide data redundancy for safe data storage. First block is always written twice in order to provide convenient support for READ DIRECTORY CIO function.

24.6.3 Structure of the blocks

Offset	Description
0	Sequential number of the block. Numbering starts from 1. In case of D modes, pairs of blocks have same sequential number.
1	Tape mode: SS=128, LS=0, SD=192, LD=64
2,3	Bits 0-11: Offset of last valid byte in the block (16-1024), this offset will be denoted as B . Bit 15: Last block flag. Byte at offset 2: $B\%256$ Byte at offset 3: $[B/256] + [128 * (EOF \text{ is true})]$
4	Undefined number. All blocks of one file should have same number here.
5	Random number. All blocks of one file must have same number here. This random number allows to distinguish files with same file name.
6-16	File name and extension padded with spaces. First 8 bytes are devoted to file name, last 3 bytes are devoted for extension.
17-1024	Data itself (1008 bytes). Data must be padded with zeros if needed.
1025	Check sum = BLOCK[0] xor BLOCK[1] xor ... xor BLOCK[1025]

24.6.4 Timing

Timing is compatible with Turbo 2000 and Super Turbo.

24.6.5 Notes

B-TAPE device handler is able to read files stored using Turbo Tape system. In order to circumvent problems with big size of the device handler, special minimalistic binary loader called MICROB was shipped with B-TAPE.

25 Turbo systems from Poland

25.1 KSO Turbo 2000 and Turbo 2000F

25.1.1 Description

Turbo systems used in Poland, originally designed together with KSO Turbo 2000 (Tape operating system) and then adopted for other tape operating systems.

Three types of pulses are distinguished: Pilot tone pulse, wide pulse and narrow pulse. Bits are stored in MSB to LSB order.

File stored using KSO Turbo 2000 system consists of blocks. First block is a header block (HEADER), other blocks are data blocks (DATA).

Every block is preceded by pilot tone (series of pilot tone pulses).

Signal is expected on some pin of joystick port (KSO Turbo 2000) or on DATA-IN pin of the SIO connector (Turbo 2000F).

25.1.2 Header block

Offset	Description
0	Always 0
1	Always 255
2-11	File name (10 characters)
12	Check sum = (HEADER[0] + HEADER[1] + ... HEADER[11]) mod 256

25.1.3 Data block

Offset	Description
0-1	Number of valid bytes in the block, 0-3072.
2-3073	Up to 3072 bytes of data padded with zeros if needed.
3074	Check sum = (BLOCK[0] + ... + BLOCK[3073]) mod 256

File ends with data block that has less than 3072 valid bytes. If the total file size can be divided by 3072 without a remainder, file must end with block that has 0 valid bytes.

25.1.4 Timing

Pulse	Width
Pilot tone	44/44100 s
Wide	22/44100 s
Narrow	11/44100 s

25.2 Atari Super Turbo (AST)

25.2.1 Description

Turbo system used in Poland suitable for accommodation of binary files. Note that the following information is incomplete.

Three types of pulses are distinguished: Wide pulse, narrow pulse and STOP pulse. Bits are stored in LSB to MSB order.

There are three main file formats: AST, BUT, and BOT. All three formats use blocks that have the following structure:

1. Pilot tone (narrow pulses)
2. Narrow pulse
3. Data (wide and narrow pulses)

4. Terminator 1(4 narrow pulses)
5. Terminator 2 (128 STOP pulses)

25.2.2 AST File Format

This file format can be used to store binary files that have up to 44 segments and no INIT segments. File consists of several blocks.

1. Header block, 256 bytes of data
2. Data blocks. For each segment of the binary file, there is one data block.

25.2.3 BUT File Format

This file format can be used to store binary files. File consists of several blocks.

1. BUT loader header block. 6 bytes of data. It appears to be a boot header.
2. BUT loader data block. 576 bytes of data.
3. Pairs of data blocks for each segment. First block in a pair is a segment header, second block in a pair holds segment data.
4. Termination segment header²

25.2.4 AST Header Block

Offset	Description
0	Number of segments (1-44)
1	Header check sum Check sum = (HEADER[2] xor HEADER[3] +xor... HEADER[255])
2-177	44 segment headers (start and end addresses)
178	Always 102
179	Always 85
180-199	File name. Internal code is used.
200	Always 0
201-244	Check sums for each segment block Check sum = (DATA[1] xor DATA[2] +xor... DATA[?])
245-255	Unknown. \$70, \$4b, \$00, \$d6, \$47, \$b4, \$cf, \$4b, \$00, \$d6, \$41.

25.2.5 BUT Loader Header Block

Offset	Description
0	Always 0
1	Length of the BUT loader data block in 128 bytes blocks. Always 5.
2,3	Loader load address. 1920.
4,5	Unknown. 182, 9.

25.2.6 BUT Loader Data Block

Offset	Description
0-575	BUT loader code

25.2.7 AST and BUT Data Block

Offset	Description
0-?	Data

²Turgen System is using slightly different format. There is no termination segment header, but the loader knows the number of segments.

25.2.8 BUT Termination Segment Header

Offset	Description
0-3	255, 255, 255, 255

25.2.9 Timing

Pulse	Width
Wide	22/44100 s
Narrow	12/44100 s
Stop	72/44100 s

25.3 Turbo Blizzard

25.3.1 Description

Turbo system used in Poland, suitable for accommodation of binary files (small blocks, high transfer speed).

Three types of pulses are distinguished: Pilot tone pulse, wide pulse and narrow pulse. Bits are stored in MSB to LSB order.

File stored using Turbo Blizzard system consists of the following blocks.

1. Synchronization block. This block is preceded with pilot tone (3072 pilot tone pulses) and two narrow pulses. Block does not accommodate any data. Block is followed with silence lasting for 0.1 second.
2. Header block (HEADER). This block is preceded with pilot tone (302 pilot tone pulses) and two narrow pulses. Then 78 bytes of data follow. Block is followed with silence lasting for at least 3 seconds.
3. One or more data blocks. These blocks are preceded with pilot tone (302 pilot tone pulses) and two narrow pulses. Then 1029 bytes of data follow. Data blocks are separated by short gaps.

25.3.2 Header block

Offset	Description
0-75	File name
76	Check sum = (HEADER[0] + HEADER[1] + ... HEADER[75]) mod 256
77	Spare byte, always 0. This byte is never read by the loaders.

25.3.3 Data block

Offset	Description
0-1	Number of valid bytes in the block, 0-1024.
2-1025	Up to 1024 bytes of data padded with zeros if needed.
1026	Always 0
1027	Check sum = (HEADER[0] + HEADER[1] + ... HEADER[1026]) mod 256
1028	Spare byte, always 0. This byte is never read by the loaders.

25.3.4 Timing

Pulse	Width
Pilot tone	24/44100 s
Wide	14/44100 s
Narrow	8/44100 s

25.4 Turbo ROM

25.4.1 Description

Turbo system used in Poland, with limitations similar to Czechoslovak Turbo 2000 and Super Turbo Systems. This turbo system can accommodate Turbo ROM compatible binary files (these binary files consist of exactly one DATA segment at most one RUN segment and at most one INIT segment) or tokenized BASIC programs.

Three types of pulses are distinguished: Wide pulse, narrow pulse and stop pulse. Bits are stored in LSB to MSB order.

File stored using Turbo ROM system consists of two blocks.

1. Header block (HEADER). This block is preceded with pilot tone (4884 wide pulses) and one narrow pulse. Then 41 bytes of data follow. After header block, there are four wide pulses and one stop pulse.
2. Data block. This block is preceded with pilot tone (516 wide pulses) and one narrow pulse. Then data follow. Data blocks are separated by short gaps. After data block, there are four wide pulses and one stop pulse.

25.4.2 Header Block for Binary Files

Offset	Description
0	Header block check sum = (HEADER[1] ... xor ... HEADER[40])
1-2	Header load address (1537)
3-4	Header length excluding first byte (40)
5	Data block check sum = (DATA[0] xor DATA[1] xor ... DATA[?])
6-7	RUN address
8-9	INIT address
10-11	Load address
12-13	Data block length
14	Padding 0
15-34	File name. Internal code is used.
35	Program type flag. For binary files there is 1.
36	0 - JSR to the INIT address, 1 - No JSR to the INIT address
37-39	Padding zeros
40	RTS opcode (96)

25.4.3 Data Block for Binary Files

Offset	Description
0-?	Data bytes

25.4.4 Header block for BASIC files

A BASIC file consist of two parts. A header part (14 bytes long) and a main part. Data from the header part is stored in the header block and data from the main part is stored in the data block. The tokenized form of the BASIC file is relocatable and can be loaded to any address. Such address is denoted as base address.

Offset	Description
0	Header block check sum = (HEADER[1] ... xor ... HEADER[77])
1-2	Header load address (1537)
3-4	Header length excluding first byte (77)
5	Data block check sum = (DATA[0] xor DATA[1] xor ... DATA[?])
6-7	RUN address (41086). Points to a routine in the BASIC ROM.
8-9	INIT address. Always 0 for a BASIC program.
10-11	LOAD address. Calculated as base address + VNT.
12-13	Data block length. Length of the main part of the BASIC file.
14	Padding 0
15-34	File name. Internal code is used.
35	Program type flag. Always 0 for a BASIC program.
36	1 - No JSR to the INIT address
37-39	Padding zeros
40-59	Routine that copies the header part to the zero page 0xA2, 0x11, 0xBD, 0x3C, 0x06, 0x95, 0x80, 0xCA, 0x10, 0xF8, 0x60
60	Header part of the BASIC file (LOMEM, VNT, VNTE, VVT, STMTAB, STMCUR, STARP)
74-75	Address right past the loaded BASIC file (LOAD address + length of the main part)
76-77	Address right past the loaded BASIC file (LOAD address + length of the main part)

25.4.5 Data Block for BASIC Files

Offset	Description
0-?	Main part of the BASIC file

25.4.6 Timing

Pulse	Width
Wide	14/44100 s
Narrow	6/44100 s
Stop	48/44100 s

25.5 Hard Turbo

25.5.1 Description

Turbo system used in Poland that can accommodate only binary files.

Three types of pulses are distinguished: Pilot tone pulse, wide pulse, and narrow pulse. Bits are stored in MSB to LSB order.

File stored using Hard Turbo system consists of many blocks. There are three types of blocks.

1. Main header block (HEADER). This block is preceded with pilot tone (at least 512 pilot tone pulses) and one narrow pulse. Then 41 bytes of data follow.
2. Segment header block (SEGHEAD). This block is preceded with pilot tone (at least 512 pilot tone pulses) and one narrow pulse. Then 6 bytes of data follow.
3. Segment data block (DATA). This block is preceded with pilot tone (at least 512 pilot tone pulses) and one narrow pulse. Then data bytes follow.

A Hard Turbo file starts with the main header block. Then pairs of segment header and segment data blocks follow. The file ends with one special segment header block.

25.5.2 Main Header Block

Offset	Description
0	Identification byte, always 0
1-39	File name. ATASCII string terminated with EOL (155)
40	Check sum = (HEADER[0] xor HEADER[1] xor ... HEADER[39])

25.5.3 Segment Header Block

Offset	Description
0	Identification byte, always 255
1,2	First address of the following segment. Value of 65535 (255 255) indicates end of file
3,4	Last address of the following segment (increased by one)
5	Check sum = (SEGHEAD[0] xor SEGHEAD[1] xor ... SEGHEAD[4])

25.5.4 Segment Data Block

Offset	Description
0	Identification byte, always 255
1-?	Segment data
Last	Check sum = (DATA[0] xor DATA[1] xor ... DATA[?])

25.5.5 Timing

Pulse	Width
Pilot	34/44100 s
Wide	22/44100 s
Narrow	12/44100 s

25.6 Lower Silesia Turbo 2000

25.6.1 Description

This turbo system appears to be very similar to Turbo 2000 from former Czechoslovakia.

Four types of pulses are distinguished: Narrow pulse, wide pulse, pilot tone pulse and sync pulse. Bits are stored in MSB to LSB order.

There are several file formats used.

25.6.2 Auto Turbo Format

This format is used to store binary files with limitations. Binary files without INIT segments can be stored and executed. Binary files with INIT segments can be stored, but not executed.

File stored using Auto Turbo format consists of two blocks - header block (HEADER) and data block (DATA). Both blocks are preceded by pilot tone (series of at least 256 pilot tone pulses) which is followed by a sync pulse (which is very narrow pulse). Recommended number of pilot tone pulses is at least 2000.

25.6.3 Unknown Exterminator Unprotected Binary Format and Protected Binary Format (UE UBF and UE PBF)

These file formats can be used to store binary files. A binary loader is prepended before the file. File consists of several blocks.

1. Dummy RUN block. 2 bytes of data (UE PBF only).
2. Pairs of data blocks for each segment. First block in a pair is a segment header (SEGHEAD), second block in a pair holds segment data (SEGDATA).
3. Termination segment header

25.6.4 Auto Turbo Header block

Offset	Description
0	Always 0
1	File type. Always 4.
2-11	File name
12-13	Always 0
14-15	Length of file
16-17	Always 0
18	Check sum = (HEADER[0]) xor ... xor (HEADER[17])

25.6.5 Auto Turbo Data block

Offset	Description
0	Always 255
1-?	Data of the binary file (includes segment headers)
Last	Check sum = (DATA[0] xor ... xor DATA[?])

25.6.6 UE PBF Dummy RUN block

Offset	Description
0,1	0x02 0xE0
2	Check sum = 0xE2

25.6.7 UE UBF and UE PBF Segment Header Block

Offset	Description
0,1	First address of the following segment
2,3	Last address of the following segment
4	Check sum = (SEGHEAD[0] xor ... xor SEGHEAD[3])

25.6.8 UE UBF and UE PBF Segment Data Block

Offset	Description
0-?	Data
Last	Check sum = (SEGDATA[0] xor ... xor SEGDATA[?])

25.6.9 UE UBF and UE PBF Termination Segment Header

Offset	Description
0-3	0x00,0x00,0x00,0x00
4	Check sum = 0x00

25.6.10 Timing

Standard transfer speed is approximately 2270 bauds. There is a big tolerance for width of all pulses.

Pulse	Center width	Tolerated range
Pilot tone	32/44100 s	(25-47)/44100 s
Wide	26/44100 s	(20-40)/44100 s
Narrow	13/44100 s	(6-19)/44100 s
Sync	10/44100 s	(4-17)/44100 s