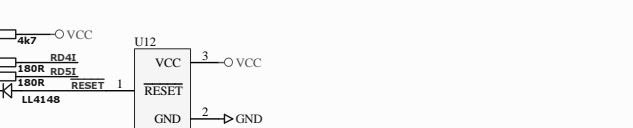
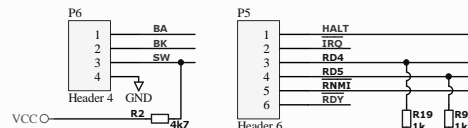
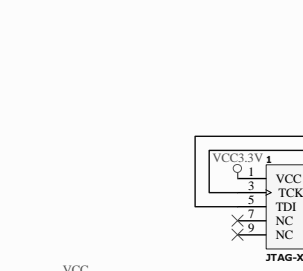
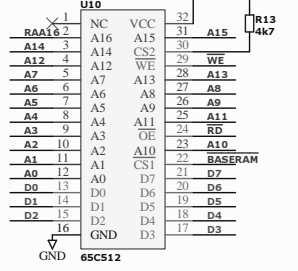
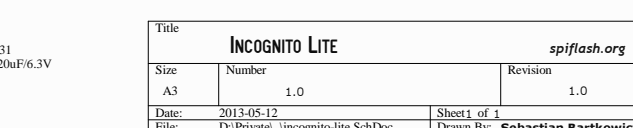
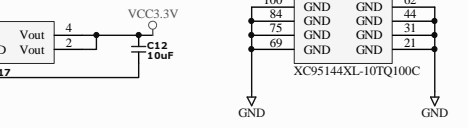
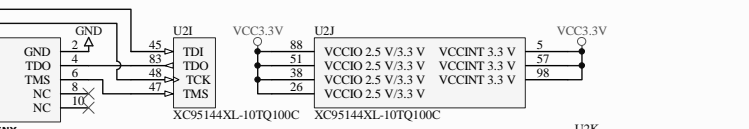
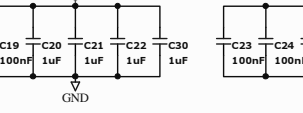
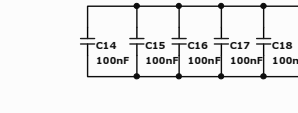


Emulation socket goes in place of Z103 (74LS42) on motherboard  
 You need to remove ROM "D" chip (A105) to gain access to IO space



Auxiliary connector for proper memory expansion and PBI emulation  
 BIOS code takes care of RNMI/RESET vector handling, so operating system will always start from valid address regardless of machine type selected (400/800 or XL/XE)

JP1 is provided for improved compatibility of CARTRIDGE port when open, and Z104 (74LS10) is in place cartridge is fed with RAS signal when close, and Z104 is removed, cartridge is fed with PH12 as in XL/XE line



Title		INCognito LITE		spiflash.org	
Size	Number	1.0		Revision	
A3				1.0	
Date:	2013-05-12			Sheet1 of 1	
File:	D:\Private\incognito-lite.SchDoc			Drawn By: Sebastian Bartkovicz	